

Spin-On Filters ■ Introduction



Product Description

STAUFF provides a complete range of Spin-On filters which can be used either as suction filters or as return line filters for low pressure applications. The various ranges meet international standards. The corresponding STAUFF Filter Elements are available from stock.

Technical Data

Material

- Filter head: Aluminium
- Sealings: NBR (Buna-N®)

Port Connection

- BSP
- NPT
- SAE Flange
- SAE O-ring thread
- Other port connections on request

Operating Pressure

- Up to 14 bar / 200 PSI

Nominal Flow Rate

- Up to 460 l/min / 120 US GPM

Options and Accessories

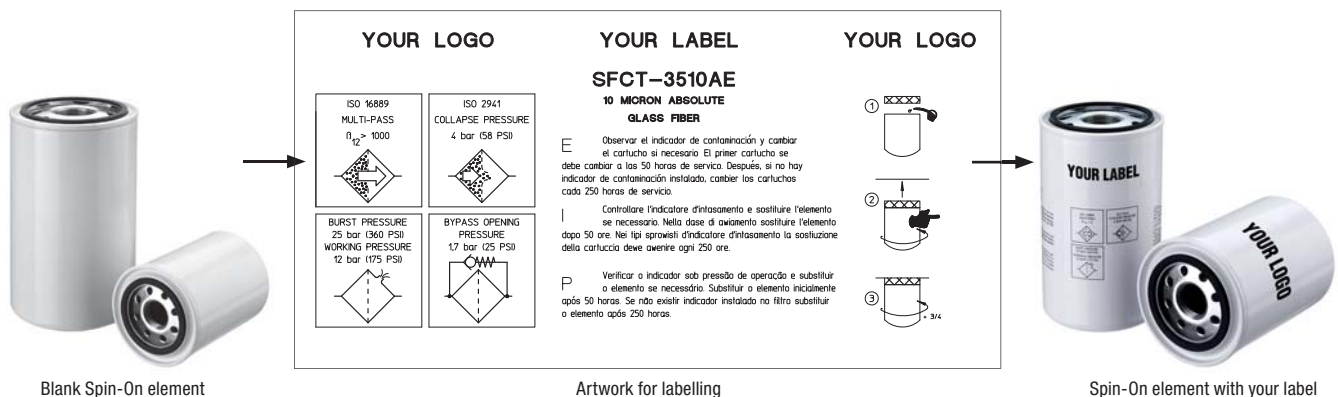
Clogging Indicators

- Visual clogging indicator with coloured segments
- Electrical clogging switch
- Other types available on request

Private Labelling

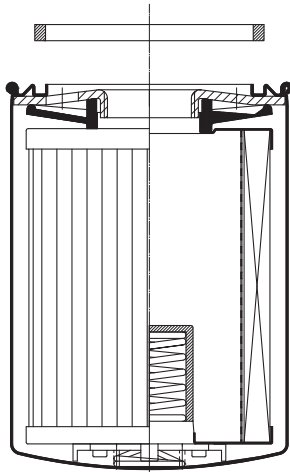
- On request, the filter elements can be printed with a private label

Private Labeling



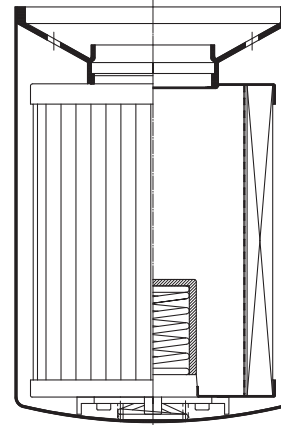
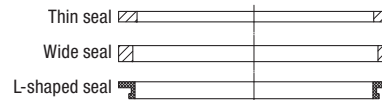
Spin-On Filters ■ Quick Reference Guide

Type A

 Spin-On Filter with seal contour A
for filter elements with inner seal

Type B

 Spin-On Filter with seal contour B
for filter elements with outer seal

Allowed seal types for Spin-On elements



Spin on Filters Quick Reference Guide

Spin-On Filter Heads

Spin-On Filter Elements (see page ...)

| Series | Size | Port | Spigot | Max. Flow Rate* | | Catalog Page | Seal Contour | | SF63 | SF65 | SF67 | SFC-35 SFC-36 | SFC-57 SFC-58 | SFCT-35 SFCT-36 | SFCT-57 SFCT-58 |
|--------|------|--------------------------------|----------------------|-----------------|--------|--------------|--------------|--------|------|------|------|------------------|------------------|--------------------|--------------------|
| | | | | l/min | US GPM | | Type A | Type B | | | | | | | |
| SLF | 02 | 1/4 NPT | 3/4-16 UNF | 19 | 5 | C124 | x | | C141 | | | | | | |
| SLF | 03 | 3/8 NPT | 3/4-16 UNF | 19 | 5 | C124 | x | | C141 | | | | | | |
| SLF | 04 | 9/16-18 UN | 3/4-16 UNF | 26 | 7 | C124 | x | | C141 | | | | | | |
| SAF | 05 | 1/2 NPT | 1-12 UNF | 57 | 15 | C125 | x | | | C142 | | | | | |
| SAF | 06 | 3/4-16 UN | 1-12 UNF | 57 | 15 | C125 | x | | | C142 | | | | | |
| SAF | 07 | 3/4 NPT | 1-12 UNF | 90 | 25 | C125 | x | | | C142 | | | | | |
| SAF | 11 | 1-1/16-12 UN | 1-12 UNF | 90 | 25 | C125 | x | | | C142 | | | | | |
| SAF | 10 | 1 NPT | 1-12 UNF | 128 | 34 | C126 | x | | | C142 | | | | | |
| SAF | 13 | 1-5/16-12 UN | 1-12 UNF | 128 | 34 | C126 | x | | | C142 | | | | | |
| SSF | 12 | G3/4 | G3/4 | 90 | 25 | C127 | x | | | | | C139 | | | |
| SSF | 20L | G1-1/4 | G1-1/4 + 1-1/2-16 UN | 225 | 60 | C128 | x | x | | | C143 | | C140 | | |
| SSF | 100 | 1 NPT | G1-1/4 + 1-1/2-16 UN | 170 | 45 | C129 | x | x | | | C143 | | C140 | | |
| SSF | 120L | 1-1/4 NPT | G1-1/4 + 1-1/2-16 UN | 225 | 60 | C129 | x | x | | | C143 | | C140 | | |
| SSF | 120 | 1-1/4 NPT | G1-1/4 + 1-1/2-16 UN | 225 | 60 | C129 | x | x | | | C143 | | C140 | | |
| SSF | 130 | 1-5/16-12 UN | G1-1/4 + 1-1/2-16 UN | 225 | 60 | C129 | x | x | | | C143 | | C140 | | |
| SSF | 160 | 1-5/8-12 UN | G1-1/4 + 1-1/2-16 UN | 225 | 60 | C129 | x | x | | | C143 | | C140 | | |
| SSF | 150 | 1-1/2 NPT | 1-1/2-16 UN | 300 | 80 | C130 | | x | | | C143 | | | | |
| SSF | 180 | 1-7/8-12 UN | 1-1/2-16 UN | 300 | 80 | C130 | | x | | | C143 | | | | |
| SSF | 24B | G1-1/2 | G1-1/4 + 1-1/2-16 UN | 454 | 120 | C131 | x | x | | | C143 | | C140 | | |
| SSF | 24N | 1-1/2 NPT | G1-1/4 + 1-1/2-16 UN | 454 | 120 | C132 | x | x | | | C143 | | C140 | | |
| SSF | 24S | 1-7/8-12 UN | G1-1/4 + 1-1/2-16 UN | 454 | 120 | C132 | x | x | | | C143 | | C140 | | |
| SSF | 25B | G1-1/4 and 1-1/2 SAE Flange | G1-1/4 + 1-1/2-16 UN | 454 | 120 | C133 | x | x | | | C143 | | C140 | | |
| SSF | 25 | 1-1/2 NPT and 2 SAE Flange | G1-1/4 + 1-1/2-16 UN | 454 | 120 | C134 | x | x | | | C143 | | C140 | | |
| SSFT | 12B | G3/4 | G3/4 | 75 | 20 | C135 | x | x | | | | | | C139 | |
| SSFT | 12 | 3/4 NPT | G3/4 | 75 | 20 | C136 | x | x | | | | | | C139 | |
| SSFT | 20B | G1-1/2 | G1-1/4 + 1-1/2-16 UN | 200 | 53 | C137 | x | | | | | | | | C140 |
| SSFT | 20 | 1-1/2 NPT | G1-1/4 + 1-1/2-16 UN | 200 | 53 | C138 | x | | | | | | | | C140 |

* Note: Reflects nominal flow rate for return line application. Actual flow rate will depend on selected element and the viscosity of the fluid.

Spin-On Filter Heads ■ SLF-02 / 03 / 04

Dimensions



Technical Data

Construction

- In-line Spin-On filter head

Material

- Aluminium

Port Connection

- NPT
- SAE O-ring thread

Flow Rate

- 26 l/min / 7 US GPM for return line application
- 7 l/min / 2 US GPM for suction line application

Operating Pressure

- Max. 14 bar / 200 PSI
- Max. 5,5 bar / 80 PSI differential pressure (for any application with no bypass valve)

Temperature Range

- -32°C ... +100°C / -25°F ... +212°F

Media Compatibility

- Mineral oils, other fluids on request

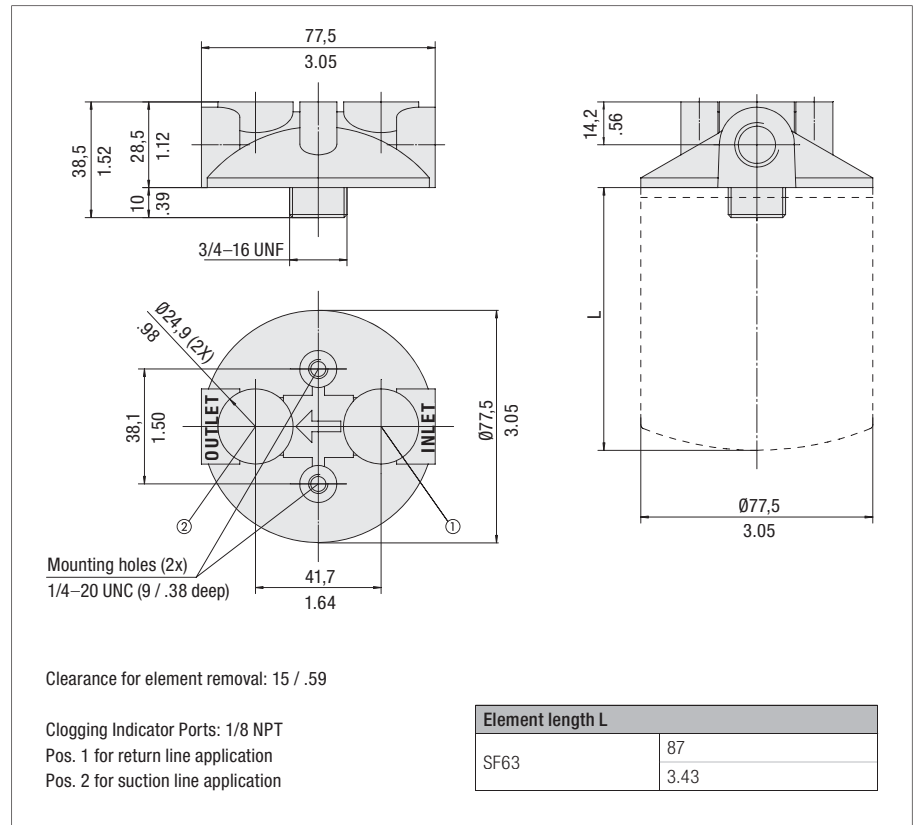
Options and Accessories

Filter Elements

- For use with SF63 series elements
- For element types with seal contour type A
- For element types and flow characteristics see page C141
- The element is not part of the scope of delivery

Clogging Indicators

- Visual clogging indicator with coloured segments
- Electrical clogging switch 0,35 ... 2,5 bar / 5 ... 35 PSI adjustable
- For clogging indicator types see page C147



Order Code

SLF - 02 - 0

1

2

3

1 Type

Spin-On Filter Head SLF

2 Connection Style

| Connection | Thread | Code |
|------------|---------|------|
| NPT | 1/4 | 02 |
| NPT | 3/8 | 03 |
| SAE | 9/16-18 | 04 |

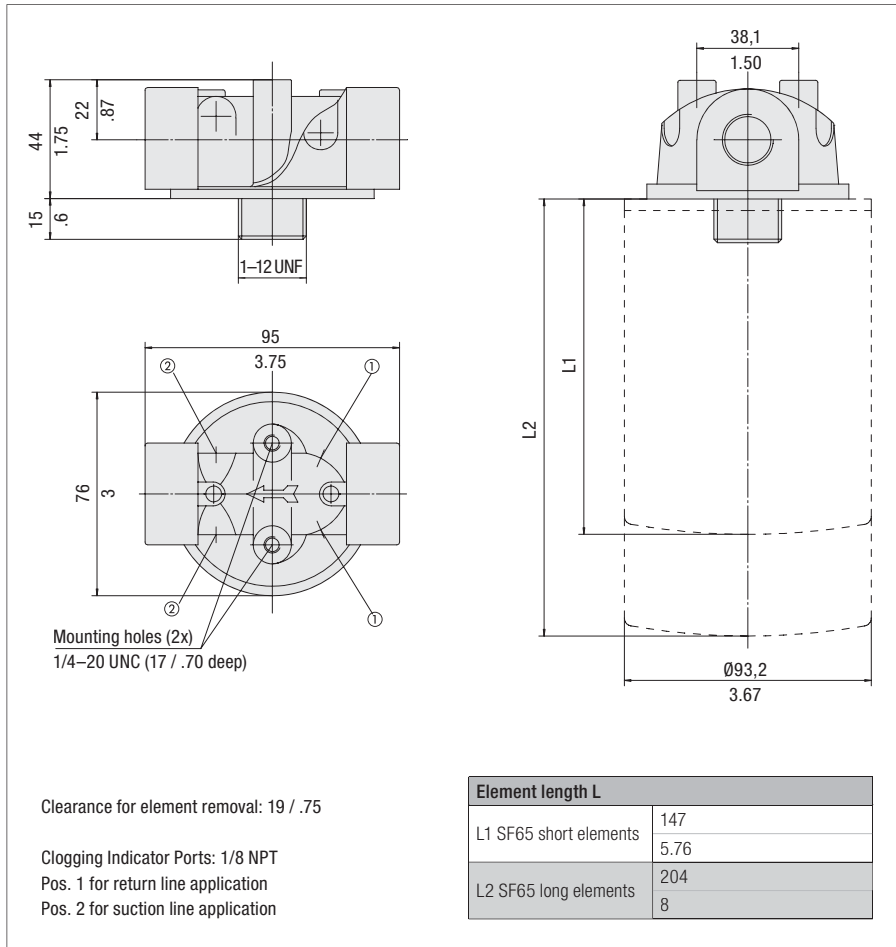
3 Clogging Indicator Port Options

| | |
|--|---|
| No clogging indicator port | 0 |
| Clogging indicator port drilled for return line application | 1 |
| Clogging indicator port drilled for suction line application | 2 |
| All clogging indicator ports drilled | 4 |
| Special | 9 |

Note: Standard clogging indicator port is 1/8 NPT.

Spin-On Filter Heads ■ SAF-05 / 06 / 07 / 11

Dimensions



Dimensions in mm / in



Technical Data

Construction

- In-line Spin-On filter head

Material

- Aluminium

Port Connection

- NPT
- SAE O-ring thread

Flow Rate

- 90 l/min / 25 US GPM for return line application
- 23 l/min / 6 US GPM for suction line application

Operating Pressure

- Max. 14 bar / 200 PSI
- Max. 5,5 bar / 80 PSI differential pressure (for any application with no bypass valve)

Temperature Range

- -32°C ... +100°C / -25°F ... +212°F

Media Compatibility

- Mineral oils, other fluids on request

Options and Accessories

Filter Elements

- For use with SF65 series elements
- For element types with seal contour type A
- For element types and flow characteristics see page C142
- The element is not part of the scope of delivery

Valve

- Bypass valve (integrated in the head): Optional

Clogging Indicators

- Visual clogging indicator with coloured segments
- Electrical clogging switch 0,35 ... 2,5 bar / 5 ... 35 PSI adjustable
- For clogging indicator types see page C147

Order Code

SAF - 07 - 25 - 0

1 2 3 4

1 Type

 Spin-On Filter Head **SAF**
2 Connection Style

| Connection | Thread | Code |
|------------|-----------|-----------|
| NPT | 1/2 | 05 |
| SAE | 3/4-16 | 06 |
| NPT | 3/4 | 07 |
| SAE | 1-1/16-12 | 11 |

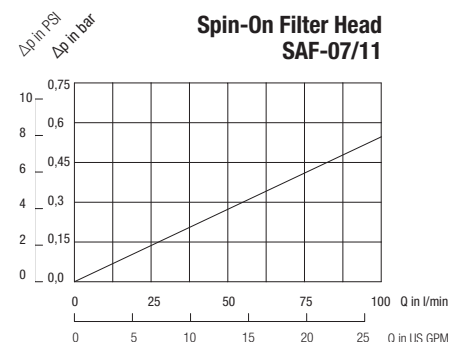
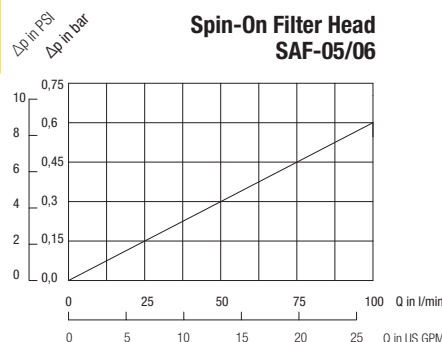
3 Bypass Options

| | |
|------------------|-----------|
| No bypass | 00 |
| 0,2 bar / 3 PSI | 03 |
| 0,35 bar / 5 PSI | 05 |
| 1 bar / 15 PSI | 15 |
| 1,7 bar / 25 PSI | 25 |

4 Clogging Indicator Port Options

| | |
|--|----------|
| No clogging indicator port | 0 |
| Clogging indicator port drilled for return line application | 1 |
| Clogging indicator port drilled for suction line application | 2 |
| All clogging indicator ports drilled | 4 |
| Special | 9 |

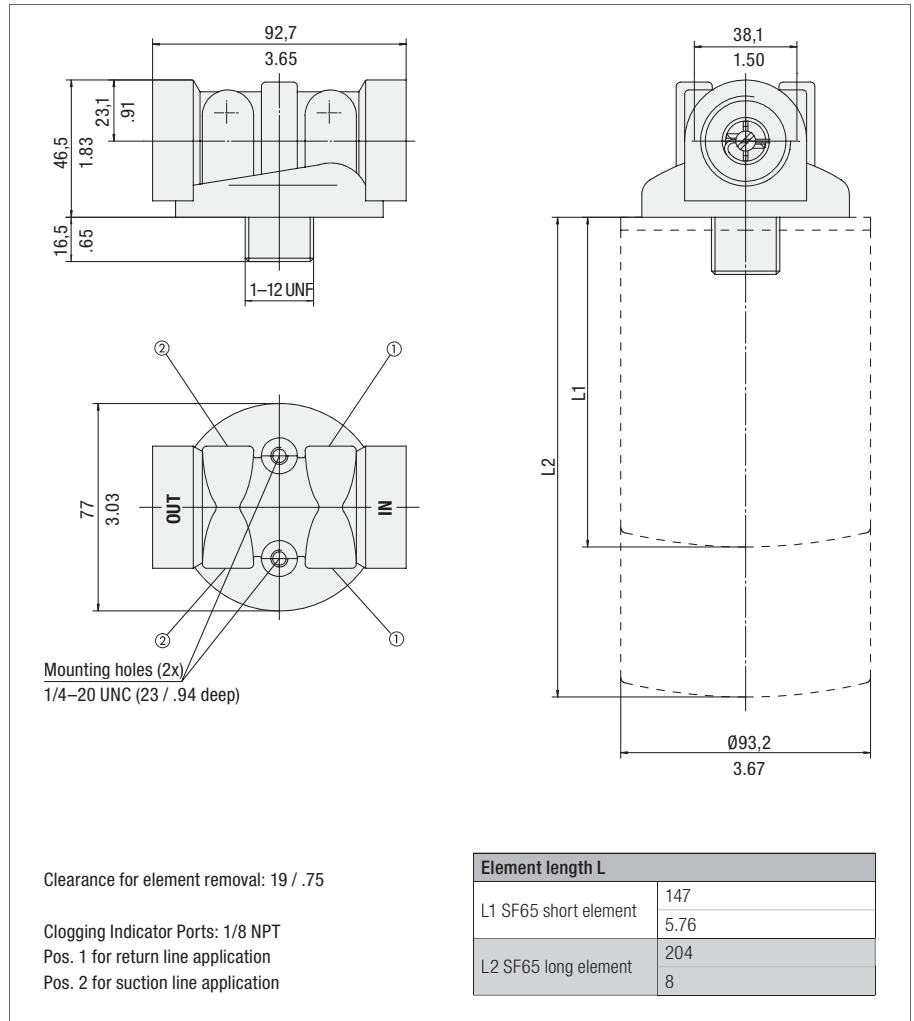
Note: Standard clogging indicator port is 1/8 NPT.



Spin-On Filter Heads ■ SAF-10 / 13



Dimensions



Dimensions in mm / in

Technical Data

Construction

- In-line Spin-On filter head

Material

- Aluminium

Port Connection

- NPT
- SAE O-ring thread

Flow Rate

- 128 l/min / 34 US GPM for return line application
- 30 l/min / 8 US GPM for suction line application

Operating Pressure

- Max. 14 bar / 200 PSI
- Max. 5,5 bar / 80 PSI differential pressure (for any applicaton with no bypass valve)

Temperature Range

- -32°C ... +100°C / -25°F ... +212°F

Media Compatibility

- Mineral oils, other fluids on request

Options and Accessories

Filter Elements

- For use with SF65 series elements
- For element types with seal contour type A
- For element types and flow characteristics see page C142
- The element is not part of the scope of delivery

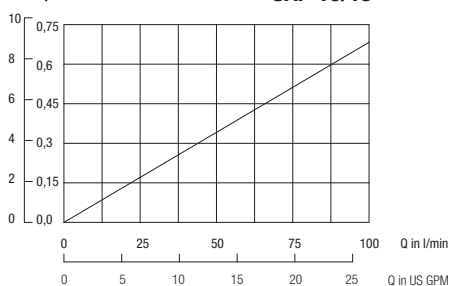
Valve

- Bypass valve (integrated in the filter head): Optional

Clogging Indicators

- Visual clogging indicator with coloured segments
- Electrical clogging switch 0,35 ... 2,5 bar / 5 ... 35 PSI adjustable
- For clogging indicator types see page C147

Spin-On Filter Head SAF-10/13



Order Code

SAF - 10 - 25 - 0

1 2 3 4

1 Type

| | |
|---------------------|-----|
| Spin-On Filter Head | SAF |
|---------------------|-----|

2 Connection Style

| Connection | Thread | Code |
|------------|-----------|------|
| NPT | 1 | 10 |
| SAE | 1-5/16-12 | 13 |

3 Bypass Options

| | |
|------------------|----|
| No bypass | 00 |
| 0,2 bar / 3 PSI | 03 |
| 0,35 bar / 5 PSI | 05 |
| 1 bar / 15 PSI | 15 |
| 1,7 bar / 25 PSI | 25 |

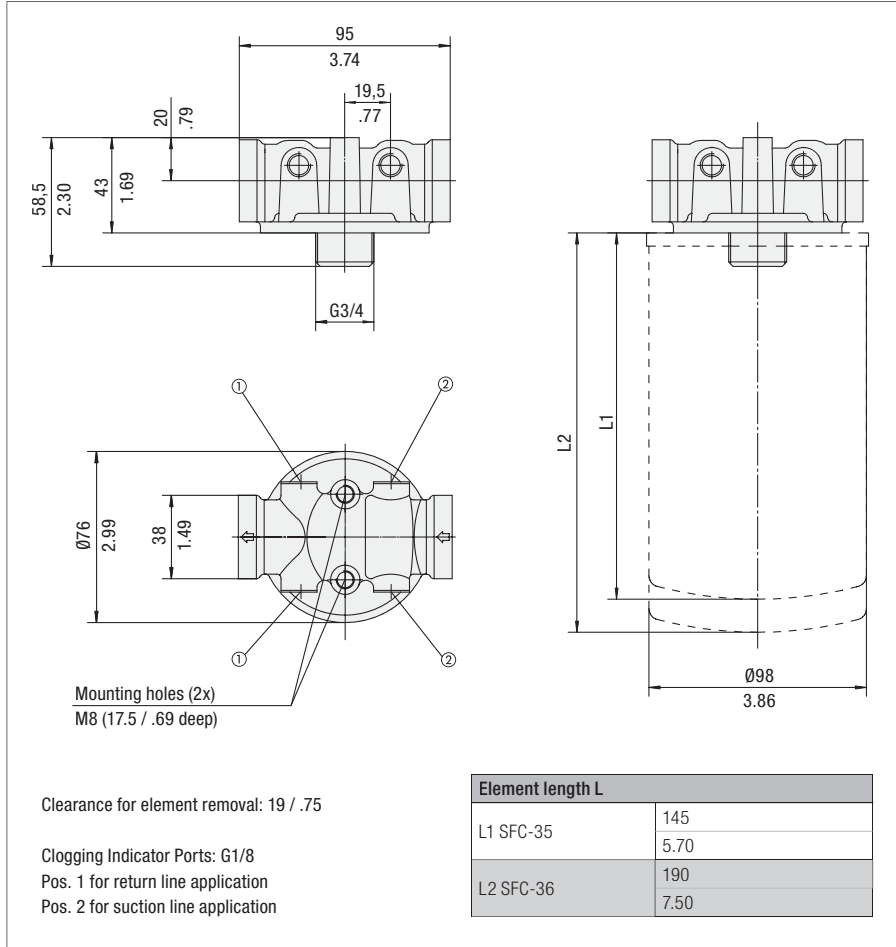
4 Clogging Indicator Port Options

| | |
|--|---|
| No clogging indicator port | 0 |
| Clogging indicator port drilled for return line application | 1 |
| Clogging indicator port drilled for suction line application | 2 |
| All clogging indicator ports drilled | 4 |
| Special | 9 |

Note: Standard clogging indicator port is 1/8 NPT.

Spin-On Filter Heads ■ SSF-12

Dimensions



Dimensions in mm / in



Technical Data

Construction

- In-line Spin-On filter head

Material

- Aluminium

Port Connection

- BSP

Flow Rate

- 90 l/min / 25 US GPM for return line application
- 23 l/min / 6 US GPM for suction line application

Operating Pressure

- Max. 12 bar / 174 PSI
- Max. 4 bar / 58 PSI differential pressure (for any application with no bypass valve)

Temperature Range

- -32°C ... +100°C / -25°F ... +212°F

Media Compatibility

- Mineral oils, other fluids on request

Options and Accessories
Filter Elements

- For use with SFC-35/36 series elements
- For element types with seal contour type A
- For element types and flow characteristics see page C139
- The element is not part of the scope of delivery

Valve

- Bypass valve (integrated in the filter head): Optional

Clogging Indicators

- Visual clogging indicator with coloured segments
- Electrical clogging switch 1,3 bar / 19 PSI adjustable
- For clogging indicator types see page C147

Order Code

SSF - 12 - 25 - 4

1 2 3 4

1 Type

 Spin-On Filter Head **SSF**
2 Connection Style

| Connection | Thread | Code |
|------------|--------|-----------|
| BSP | 3/4 | 12 |

3 Bypass Options

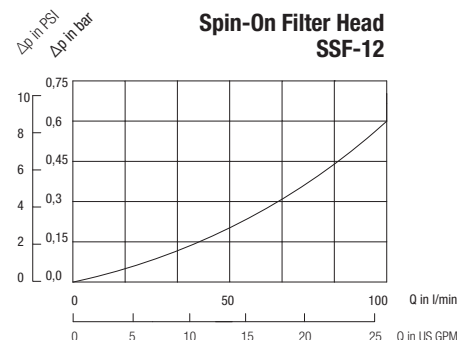
| | |
|------------------|-----------|
| No bypass | 00 |
| 0,2 bar / 3 PSI | 03 |
| 1,7 bar / 25 PSI | 25 |

Note: Other settings available on request.

4 Clogging Indicator Port Options

| | |
|--------------------------------------|----------|
| All clogging indicator ports drilled | 4 |
| Special | 9 |

Note: Standard clogging indicator port is G1/8.



Spin-On Filter Heads ■ SSF-20L



Technical Data

Construction

- In-line Spin-On filter head

Material

- Aluminium

Port Connection

- BSP

Flow Rate

- 225 l/min / 60 US GPM for return line application
- 46 l/min / 12 US GPM for suction line application

Operating Pressure

- Max. 12 bar / 174 PSI
- Max. 4 bar / 58 PSI differential pressure (for any applicaton with no bypass valve)

Temperature Range

- -32°C ... +100°C / -25°F ... +212°F

Media Compatibility

- Mineral oils, other fluids on request

Options and Accessories

Filter Elements

- For use with SF67 and SFC-57/58 series elements
- For element types with seal contour type A and B
- For element types and flow characteristics see page C143 for SF67 and page C140 for SFC-57/58.
- The element is not part of the scope of delivery

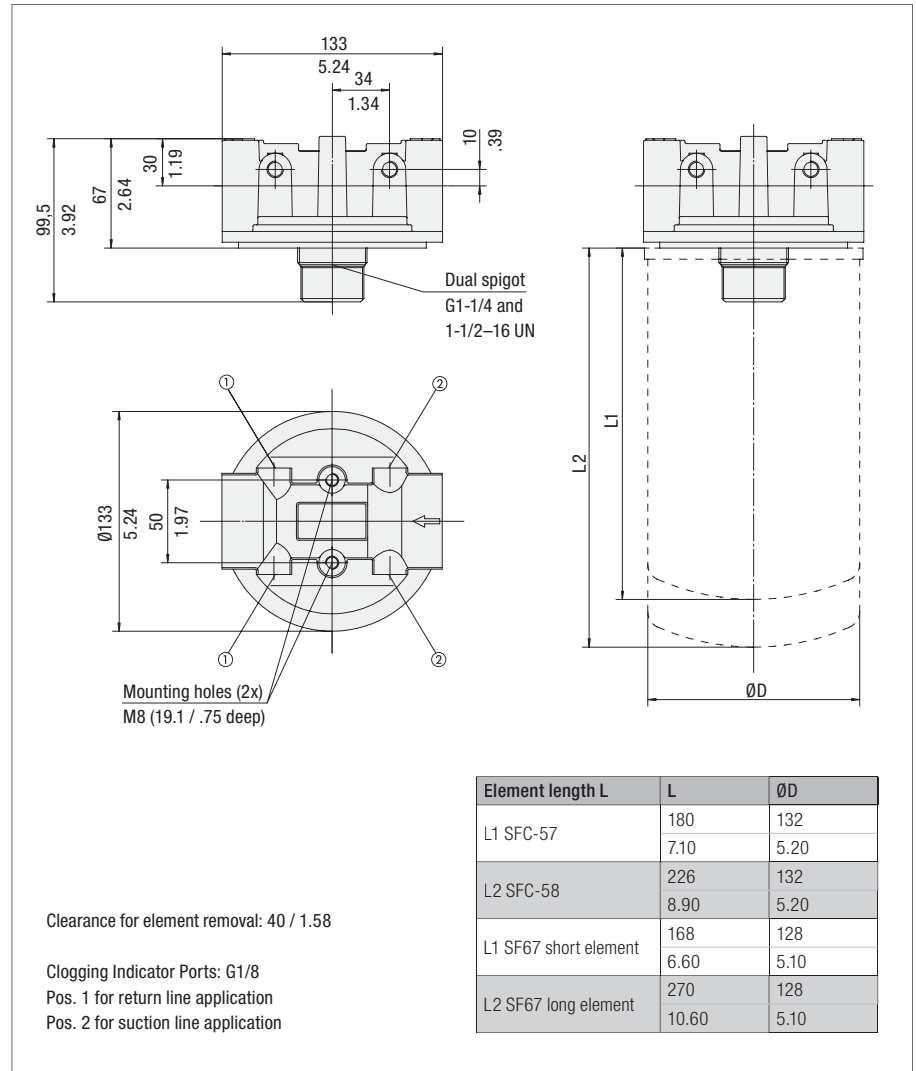
Valve

- Bypass valve (integrated in the filter head): Optional

Clogging Indicators

- Visual clogging indicator with coloured segments
- Electrical clogging switch 0,35 ... 2,5 bar / 5 ... 35 PSI adjustable
- For clogging indicator types see page C147

Dimensions



Dimensions in mm / in

Order Code

SSF - 20L - 25 - 4

1
2
3
4

1 Type

| | |
|---------------------|-----|
| Spin-On Filter Head | SSF |
|---------------------|-----|

2 Connection Style

| Connection | Thread | Code |
|------------|--------|------|
| BSP | 1-1/4 | 20L |

3 Bypass Options

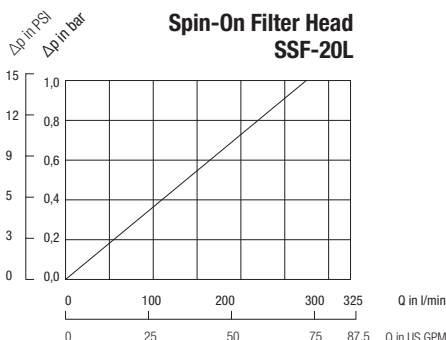
| | |
|------------------|----|
| No bypass | 00 |
| 0,2 bar / 3 PSI | 03 |
| 1,7 bar / 25 PSI | 25 |

Note: Other settings available on request.

4 Clogging Indicator Port Options

| | |
|--------------------------------------|---|
| All clogging indicator ports drilled | 4 |
| Special | 9 |

Note: Standard clogging indicator port for is G1/8.



Spin-On Filter Heads ■ SSF-100 / 120 / 120L / 130 / 160

Dimensions

Dual spigot G1-1/4 and 1-1/2-16 UN

Mounting holes (2x)
5/16-18 UNC
(19 / .75 deep)

Clearance for element removal: 40 / 1.58

Clogging Indicator Ports: 1/8 NPT
Pos. 1 for return line application
Pos. 2 for suction line application

| Element length L | L | ØD |
|-----------------------|-------|------|
| L1 SFC-57 | 180 | 132 |
| | 7.10 | 5.20 |
| L2 SFC-58 | 226 | 132 |
| | 8.90 | 5.20 |
| L1 SF67 short element | 168 | 128 |
| | 6.60 | 5.10 |
| L2 SF67 long element | 270 | 128 |
| | 10.60 | 5.10 |

Dimensions in mm / in



Technical Data

Construction

- In-line Spin-On filter head

Material

- Aluminium

Port Connection

- NPT
- SAE O-ring thread

Flow Rate

- 225 l/min / 60 US GPM for return line application
- 46 l/min / 12 US GPM for suction line application

Operating Pressure

- Max. 14 bar / 200 PSI
- Max. 5,5 bar / 80 PSI differential pressure (for any applicaton with no bypass valve)

Temperature Range

- -32°C ... +100°C / -25°F ... +212°F

Media Compatibility

- Mineral oils, other fluids on request

Options and Accessories

Filter Elements

- For use with SF67 and SFC-57/58 series elements
- For element types with seal contour type A and B
- For element types and flow characteristics see page C143 for SF67 and page C140 for SFC-57/58.
- The element is not part of the scope of delivery

Valve

- Bypass valve (integrated in the filter head): Optional

Clogging Indicators

- Visual clogging indicator with coloured segments
- Electrical clogging switch 0,35 ... 2,5 bar / 5 ... 35 PSI adjustable
- For clogging indicator types see page C147

Order Code



1 Type

| | |
|---------------------|------------|
| Spin-On Filter Head | SSF |
|---------------------|------------|

2 Connection Style

| Connection | Thread | Code |
|------------|-----------|-------------|
| NPT | 1 | 100 |
| NPT | 1-1/4 | 120L |
| NPT | 1-1/2 | 120 |
| SAE | 1-5/16-12 | 130 |
| SAE | 1-5/8-12 | 160 |

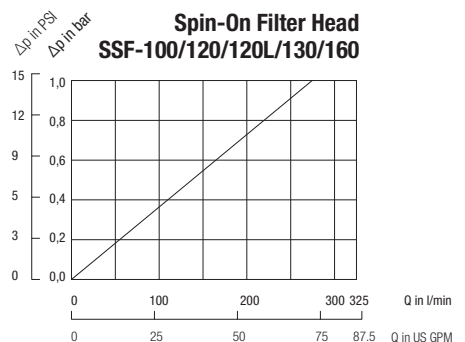
3 Bypass Options

| | |
|------------------|-----------|
| No bypass | 00 |
| 0,2 bar / 3 PSI | 03 |
| 0,35 bar / 5 PSI | 05 |
| 1 bar / 15 PSI | 15 |
| 1,7 bar / 25 PSI | 25 |

4 Clogging Indicator Port Options

| | |
|--|----------|
| No clogging indicator port | 0 |
| Clogging indicator port drilled for return line application | 1 |
| Clogging indicator port drilled for suction line application | 2 |
| All clogging indicator ports drilled | 4 |
| Special | 9 |

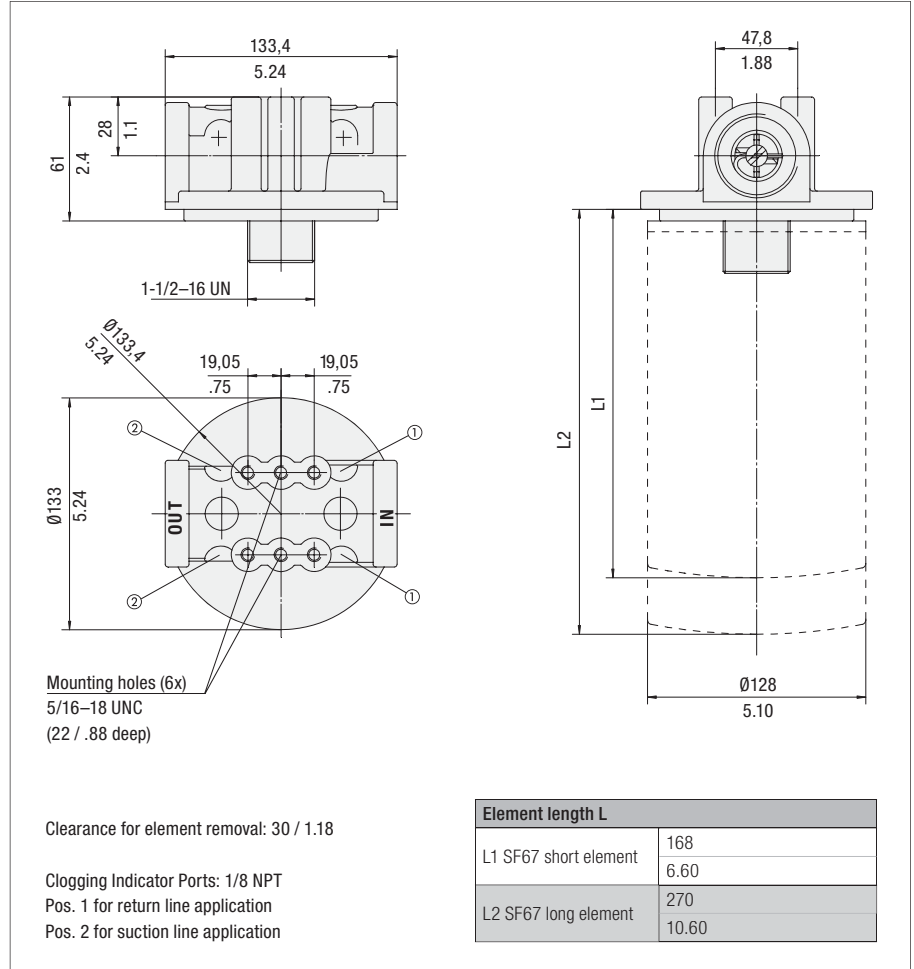
Note: Standard clogging indicator port is 1/8 NPT.



Spin-On Filter Heads ■ SSF-150 / 180



Dimensions



Dimensions in mm / in

Technical Data

Construction

- In-line Spin-On filter head

Material

- Aluminium

Port Connection

- NPT
- SAE O-ring thread

Flow Rate

- 300 l/min / 80 US GPM for return line application
- 113 l/min / 30 US GPM for suction line application

Operating Pressure

- Max. 14 bar / 200 PSI
- Max. 5,5 bar / 80 PSI differential pressure (for any applicaton with no bypass valve)

Temperature Range

- -32°C ... +100°C / -25°F ... +212°F

Media Compatibility

- Mineral oils, other fluids on request

Options and Accessories

Filter Elements

- For use with SF67 series elements
- For element types with seal contour type B
- For element types and flow characteristics see page C143
- The element is not part of the scope of delivery

Valve

- Bypass valve (integrated in the filter head): Optional

Clogging Indicators

- Visual clogging indicator with coloured segments
- Electrical clogging switch 0,35 ... 2,5 bar / 5 ... 35 PSI adjustable
- For clogging indicator types see page C147

Order Code

SSF - 150 - 25 - 0

1
2
3
4

1 Type

| | |
|---------------------|------------|
| Spin-On Filter Head | SSF |
|---------------------|------------|

2 Connection Style

| Connection | Thread | Code |
|------------|----------|------------|
| NPT | 1-1/2 | 150 |
| SAE | 1-7/8-12 | 180 |

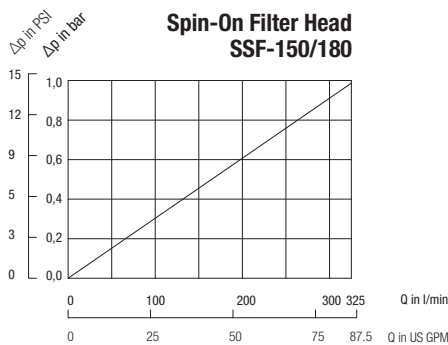
3 Bypass Options

| | |
|------------------|-----------|
| No bypass | 00 |
| 0,2 bar / 3 PSI | 03 |
| 0,35 bar / 5 PSI | 05 |
| 1 bar / 15 PSI | 15 |
| 1,7 bar / 25 PSI | 25 |

4 Clogging Indicator Port Options

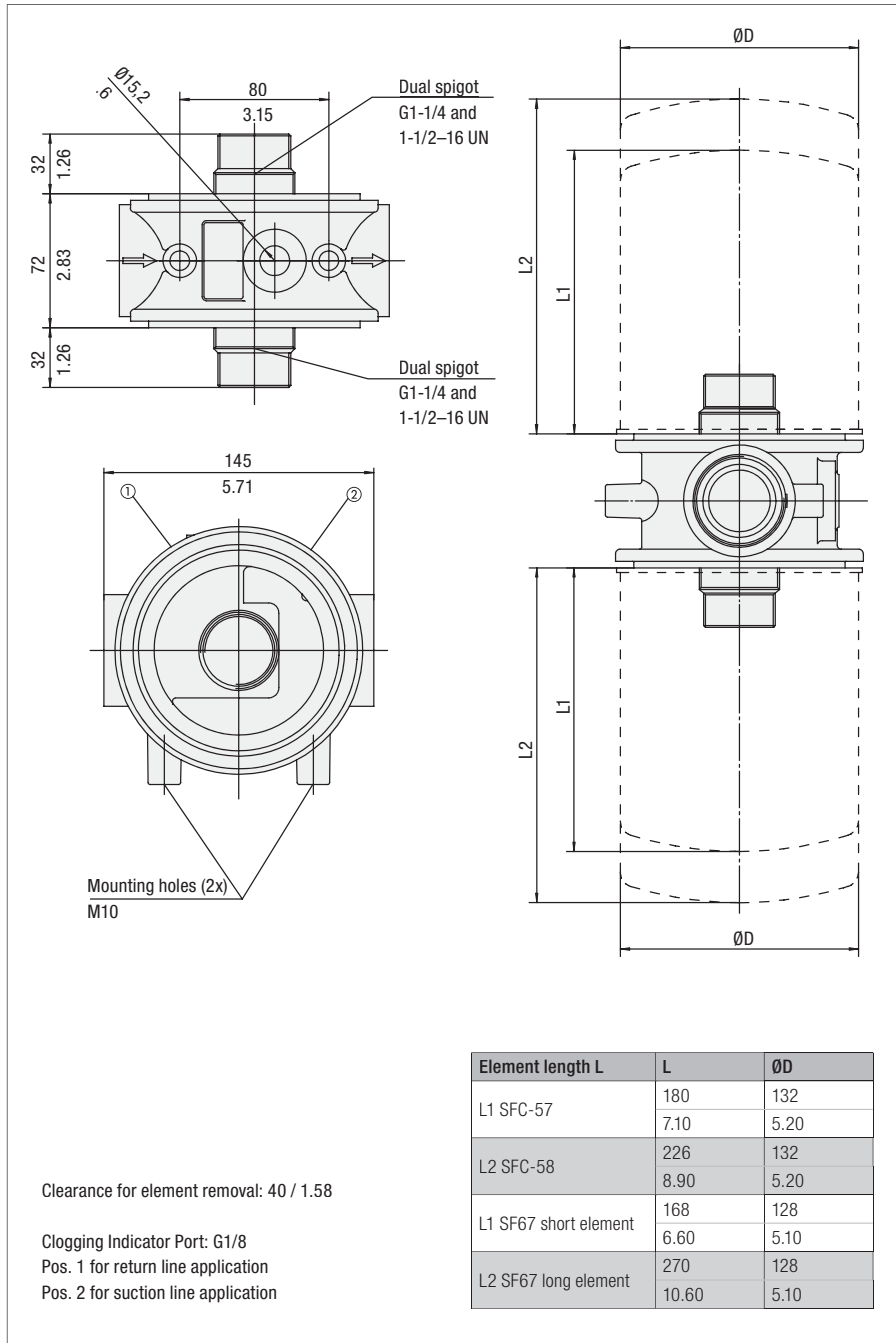
| | |
|--|----------|
| No clogging indicator port | 0 |
| Clogging indicator port drilled for return line application | 1 |
| Clogging indicator port drilled for suction line application | 2 |
| All clogging indicator ports drilled | 4 |
| Special | 9 |

Note: Standard clogging indicator port is 1/8 NPT.



Double Spin-On Filter Heads ■ SSF-24B

Dimensions



Dimensions in mm / in



Technical Data

Construction

- In-line Double Spin-On filter head

Material

- Aluminium

Port Connection

- BSP

Flow Rate

- 454 l/min / 120 US GPM for return line application
- 132 l/min / 35 US GPM for suction line application

Operating Pressure

- Max. 12 bar / 174 PSI
- Max. 4 bar / 58 PSI differential pressure (for any application with no bypass valve)

Temperature Range

- -30°C ... +100°C / -22°F ... +212°F

Media Compatibility

- Mineral oils, other fluids on request

Options and Accessories
Filter Elements

- For use with SF67 and SFC-57/58 series elements
- For element types with seal contour type A and B
- For element types and flow characteristics see page C143 for SF67 and page C140 for SFC-57/58
- The element is not part of the scope of delivery

Valve

- Bypass valve (integrated in the head): Optional

Clogging Indicators

- Visual clogging indicator with coloured segments
- Electrical clogging switch 0,35 ... 2,5 bar / 5 ... 35 PSI adjustable
- For clogging indicator types see page C147

Order Code

SSF - 24B - 25 - 4

1 2 3 4

1 Type

 Double Spin-On Filter Head **SSF**
2 Connection Style

| Connection | Thread | Code |
|------------|--------|------------|
| BSP | 1-1/2 | 24B |

3 Bypass Options

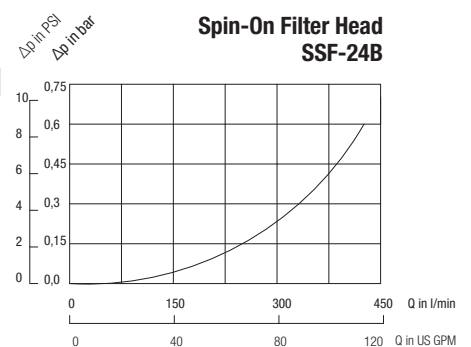
| | |
|------------------|-----------|
| No bypass | 00 |
| 0,2 bar / 3 PSI | 03 |
| 1,7 bar / 25 PSI | 25 |

Note: Other settings available on request.

4 Clogging Indicator Port Options

| | |
|--------------------------------------|----------|
| All clogging indicator ports drilled | 4 |
| Special | 9 |

Note: Standard clogging indicator port is G1/8.



Double Spin-On Filter Heads ■ SSF-24N / 24S

Dimensions



Technical Data

Construction

- In-line Double Spin-On filter head

Material

- Aluminium

Port Connection

- NPT
- SAE flange
- SAE O-ring thread

Flow Rate

- 454 l/min / 120 US GPM for return line application
- 132 l/min / 35 US GPM for suction line application

Operating Pressure

- Max. 12 bar / 174 PSI
- Max. 5,5 bar / 80 PSI differential pressure (for any application with no bypass valve)

Temperature Range

- -30°C ... +100°C / -22°F ... +212°F

Media Compatibility

- Mineral oils, other fluids on request

Options and Accessories

Filter Elements

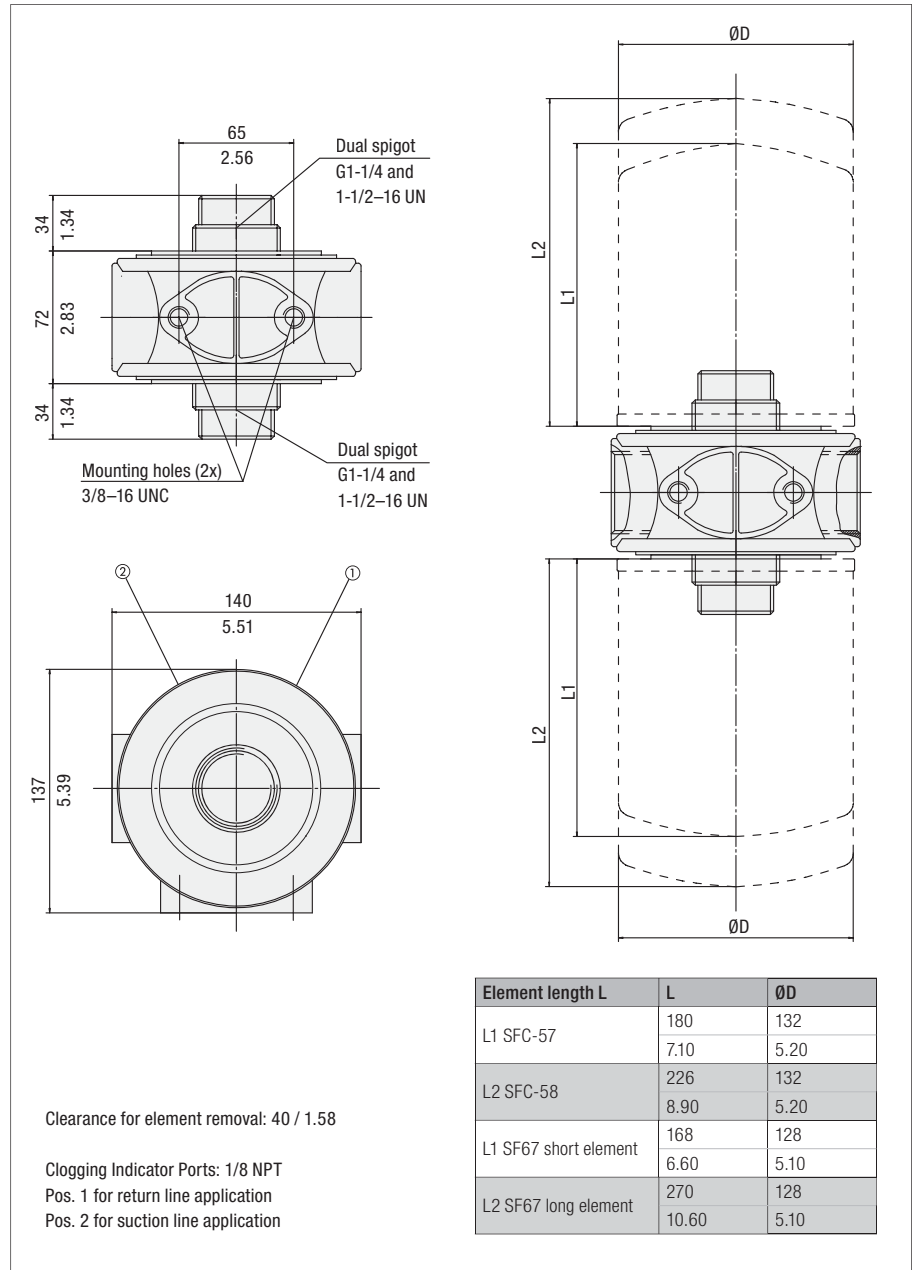
- For use with SF67 and SFC-57/58 series elements
- For element types with seal contour type A and B
- For element types and flow characteristics see page C143 for SF67 and page C140 for SFC-57/58
- The element is not part of the scope of delivery

Valve

- Bypass valve (integrated in the head): Optional

Clogging Indicators

- Visual clogging indicator with coloured segments
- Electrical clogging switch 0,35 ... 2,5 bar / 5 ... 35 PSI adjustable
- For clogging indicator types see page C147



Dimensions in mm / in

Order Code

SSF - 24N - 25 - 0

1 2 3 4

1 Type

Double Spin-On Filter Head **SSF**

2 Connection Style

| Connection | Thread | Code |
|------------|----------|------------|
| NPT | 1-1/2 | 24N |
| SAE | 1-7/8-12 | 24S |

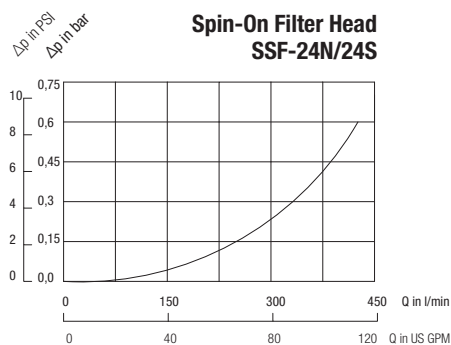
3 Bypass Options

| | |
|------------------|-----------|
| No bypass | 00 |
| 0,2 bar / 3 PSI | 03 |
| 0,35 bar / 5 PSI | 05 |
| 1 bar / 15 PSI | 15 |
| 1,7 bar / 25 PSI | 25 |

4 Clogging Indicator Port Options

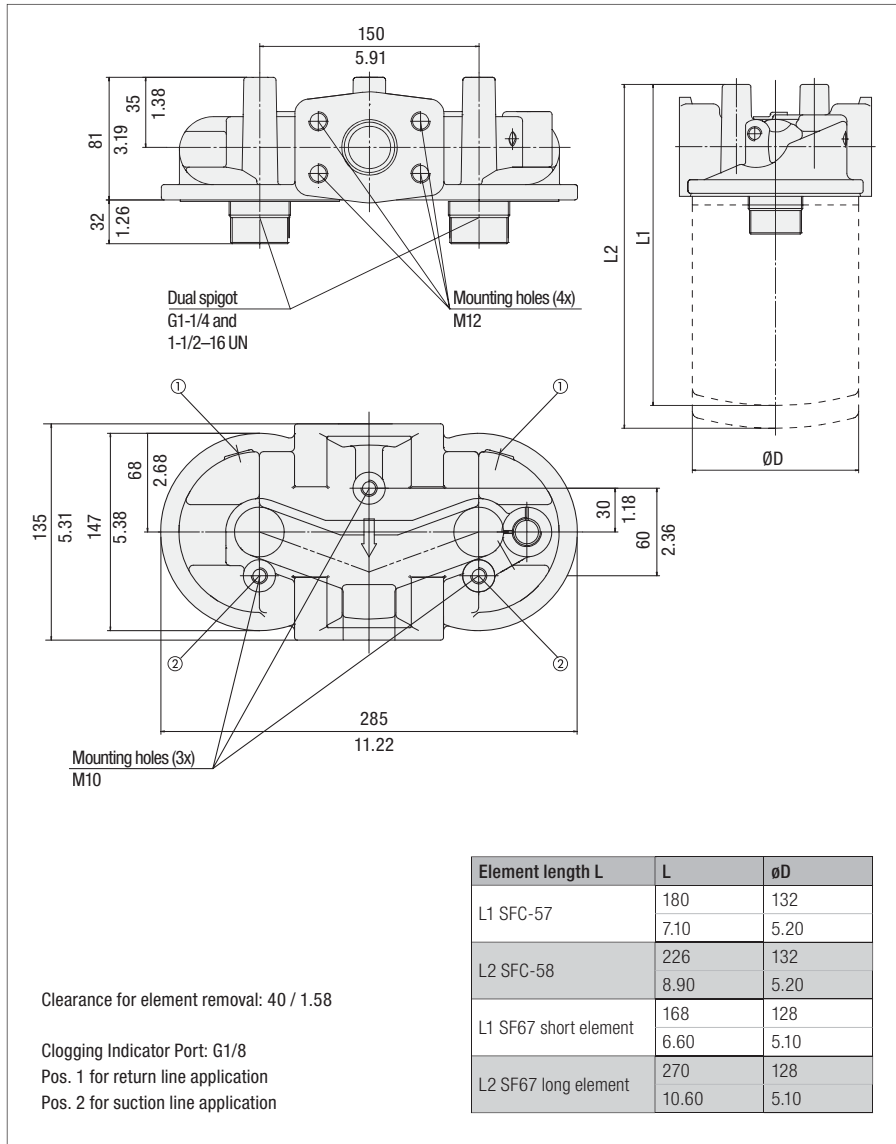
| | |
|--|----------|
| No clogging indicator port | 0 |
| Clogging indicator port drilled for return line application | 1 |
| Clogging indicator port drilled for suction line application | 2 |
| All clogging indicator ports drilled | 4 |
| Special | 9 |

Note: Standard clogging indicator port is 1/8 NPT.



Double Spin-On Filter Heads ■ SSF-25B

Dimensions



Dimensions in mm / in



Technical Data

Construction

- In-line Double Spin-On filter head

Material

- Aluminium

Port Connection

- BSP
- SAE flange

Flow Rate

- 454 l/min / 120 US GPM for return line application
- 132 l/min / 35 US GPM for suction line application

Operating Pressure

- Max. 12 bar / 174 PSI
- Max. 4 bar / 58 PSI differential pressure (for any application with no bypass valve)

Temperature Range

- -30°C ... +100°C / -22°F ... +212°F

Media Compatibility

- Mineral oils, other fluids on request

Options and Accessories
Filter Elements

- For use with SF67 and SFC-57/58 series elements
- For element types with seal contour type A and B
- For element types and flow characteristics see page C143 for SF67 and page C140 for SFC-57/58
- The element is not part of the scope of delivery

Valve

- Bypass valve (integrated in the head): Optional

Clogging Indicators

- Visual clogging indicator with coloured segments
- Electrical clogging switch 0,35 ... 2,5 bar / 5 ... 35 PSI adjustable
- For clogging indicator types see page C147

Order Code

SSF - 25B - 25 - 4

1 2 3 4

1 Type

 Double Spin-On Filter Head **SSF**
2 Connection Style

| Connection | Thread | Code |
|--------------------|------------------------------------|------------|
| BSP and SAE Flange | 1-1/2 and 1-1/2 SAE Code 61 Flange | 25B |

3 Bypass Options

| | |
|------------------|-----------|
| No bypass | 00 |
| 0,2 bar / 3 PSI | 03 |
| 1,7 bar / 25 PSI | 25 |

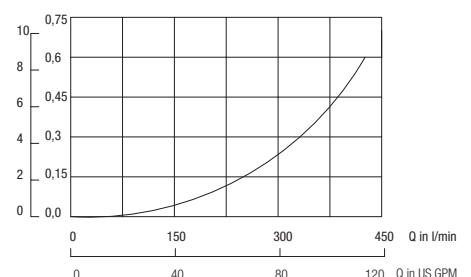
Note: Other settings available on request.

4 Clogging Indicator Port Options

| | |
|--------------------------------------|----------|
| All clogging indicator ports drilled | 4 |
| Special | 9 |

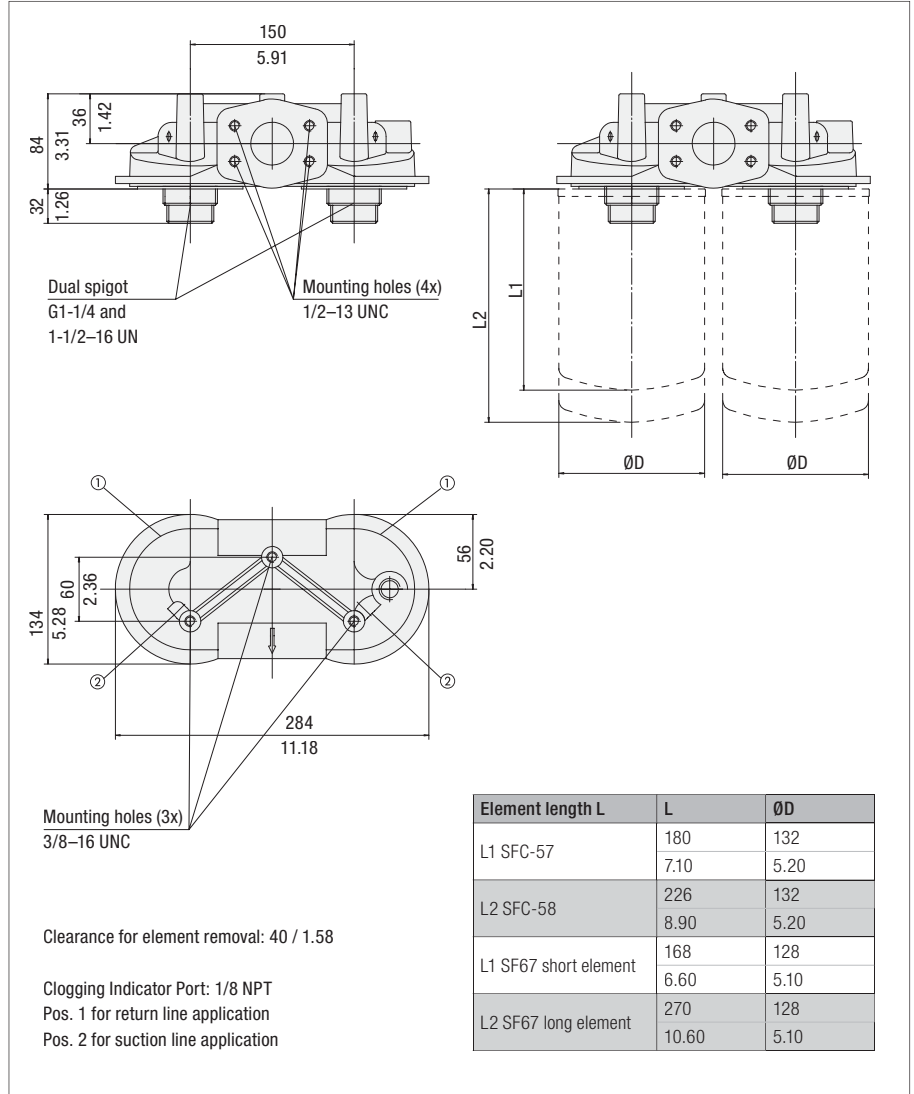
Note: Standard clogging indicator port is G1/8.

Spin-On Filter Head SSF-25B



Double Spin-On Filter Heads ■ SSF-25

Dimensions



Technical Data

Construction

- In-line Double Spin-On filter head

Material

- Aluminium

Port Connection

- NPT
- SAE flange

Flow Rate

- 454 l/min / 120 US GPM for return line application
- 132 l/min / 35 US GPM for suction line application

Operating Pressure

- Max. 12 bar / 174 PSI
- Max. 5,5 bar / 80 PSI differential pressure (for any applicaton with no bypass valve)

Temperature Range

- -30°C ... +100°C / -22°F ... +212°F

Media Compatibility

- Mineral oils, other fluids on request

Options and Accessories

Filter Elements

- For use with SF67 and SFC-57/58 series elements
- For element types with seal contour type A and B
- For element types and flow characteristics see page C143 for SF67 and page C140 for SFC-57/58
- The element is not part of the scope of delivery

Valve

- Bypass valve (integrated in the head): Optional

Clogging Indicators

- Visual clogging indicator with coloured segments
- Electrical clogging switch 0,35 ... 2,5 bar / 5 ... 35 PSI adjustable
- For clogging indicator types see page C147

Dimensions in mm / in

Order Code



1 Type

Double Spin-On Filter Head **SSF**

2 Connection Style

| Connection | Thread | Code |
|--------------------|--------------------------------|-----------|
| NPT and SAE Flange | 1-1/2 and 2 SAE Code 61 Flange | 25 |

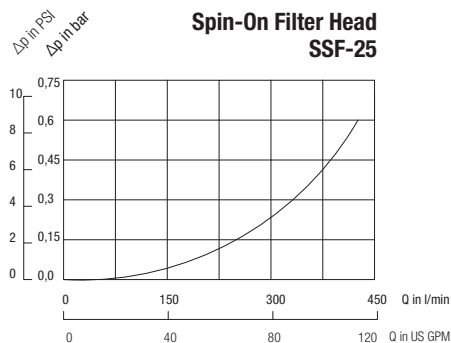
3 Bypass Options

| | |
|------------------|-----------|
| No bypass | 00 |
| 0,2 bar / 3 PSI | 03 |
| 0,35 bar / 5 PSI | 05 |
| 1 bar / 15 PSI | 15 |
| 1,7 bar / 25 PSI | 25 |

4 Clogging Indicator Port Options

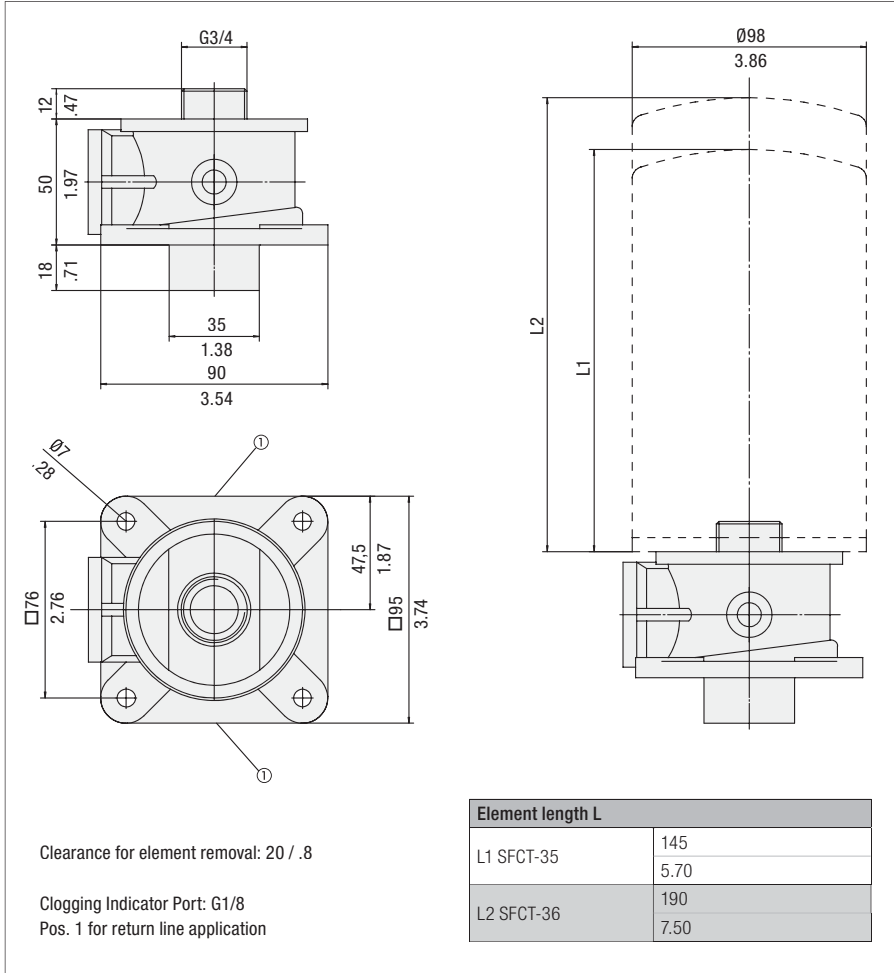
| | |
|--|----------|
| No clogging indicator port | 0 |
| Clogging indicator port drilled for return line application | 1 |
| Clogging indicator port drilled for suction line application | 2 |
| All clogging indicator ports drilled | 4 |
| Special | 9 |

Note: Standard clogging indicator port is 1/8 NPT.



Tank Top Spin-On Filter Heads ■ SSFT-12B

Dimensions



Technical Data

Construction

- Tank Top Spin-On filter head

Material

- Aluminium

Port Connection

- BSP

Flow Rate

- 75 l/min / 20 US GPM

Operating Pressure

- Max. 7 bar / 100 PSI

Temperature Range

- -30°C ... +100°C / -22°F ... +212°F

Media Compatibility

- Mineral oils, other fluids on request

Options and Accessories

Filter Elements

- For use with SFCT-35/36 series elements
For element types with seal contour type A and B
For element types and flow characteristics
see page C139.
The element is not part of the scope of delivery

Valve

- Bypass valve 1,7 bar / 25 PSI integrated in the filter element

Clogging Indicators

- Visual clogging indicator with coloured segments
- Electrical clogging switch 0,35 ... 2,5 bar / 5 ... 35 PSI adjustable
For clogging indicator types see page C147

Order Code

SSFT - 12B - 1

1 2 3

1 Type

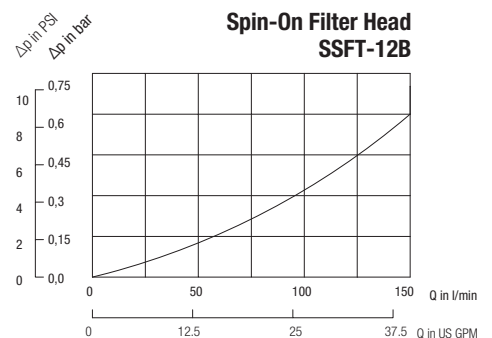
 Spin-On Filter Head **SSFT**
2 Connection Style

| Connection | Thread | Code |
|------------|--------|------------|
| BSP | 3/4 | 12B |

3 Clogging Indicator Port Options

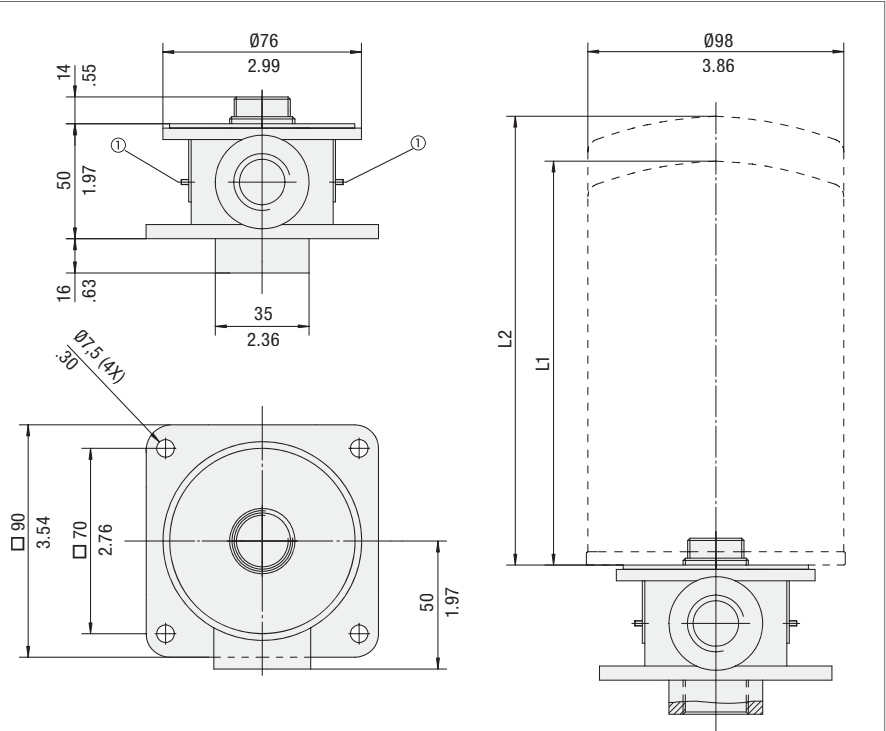
| | |
|---|----------|
| No clogging indicator port | 0 |
| Clogging indicator port drilled for return line application | 1 |
| Special | 9 |

Note: Standard clogging indicator port is G1/8.



Tank Top Spin-On Filter Heads ■ SSFT-12

Dimensions



Technical Data

Construction

- Tank Top Spin-On filter head

Material

- Aluminium

Port Connection

- NPT

Flow Rate

- 75 l/min / 20 US GPM

Operating Pressure

- Max. 7 bar / 100 PSI

Temperature Range

- -30°C ... +100°C / -22°F ... +212°F

Media Compatibility

- Mineral oils, other fluids on request

Options and Accessories

Filter Elements

- For use with SFCT-35/36 series elements
- For element types with seal contour type A and B
- For element types and flow characteristics see page C139
- The element is not part of the scope of delivery

Valve

- Bypass valve 1,7 bar / 25 PSI integrated in the filter element

Clogging Indicators

- Visual clogging indicator with coloured segments
- Electrical clogging switch 0,35 ... 2,5 bar / 5 ... 35 PSI adjustable
- For clogging indicator types see page C147

Clearance for element removal: 20 / .8

Clogging Indicator Port: 1/8 NPT
Pos. 1 for return line application

| Element length L | |
|------------------|------|
| L1 SFCT-35 | 145 |
| | 5.70 |
| L2 SFCT-36 | 190 |
| | 7.50 |

Dimensions in mm / in

Order Code

SSFT - 12 - 1

1 2 3

1 Type

Spin-On Filter Head **SSFT**

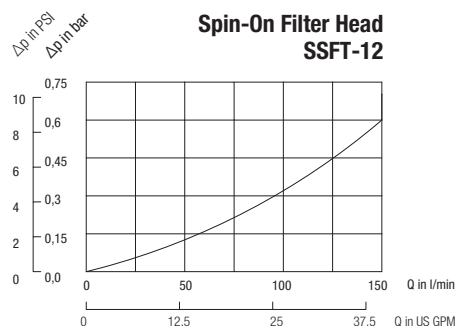
2 Connection Style

| Connection | Thread | Code |
|------------|--------|-----------|
| NPT | 3/4 | 12 |

3 Clogging Indicator Port Options

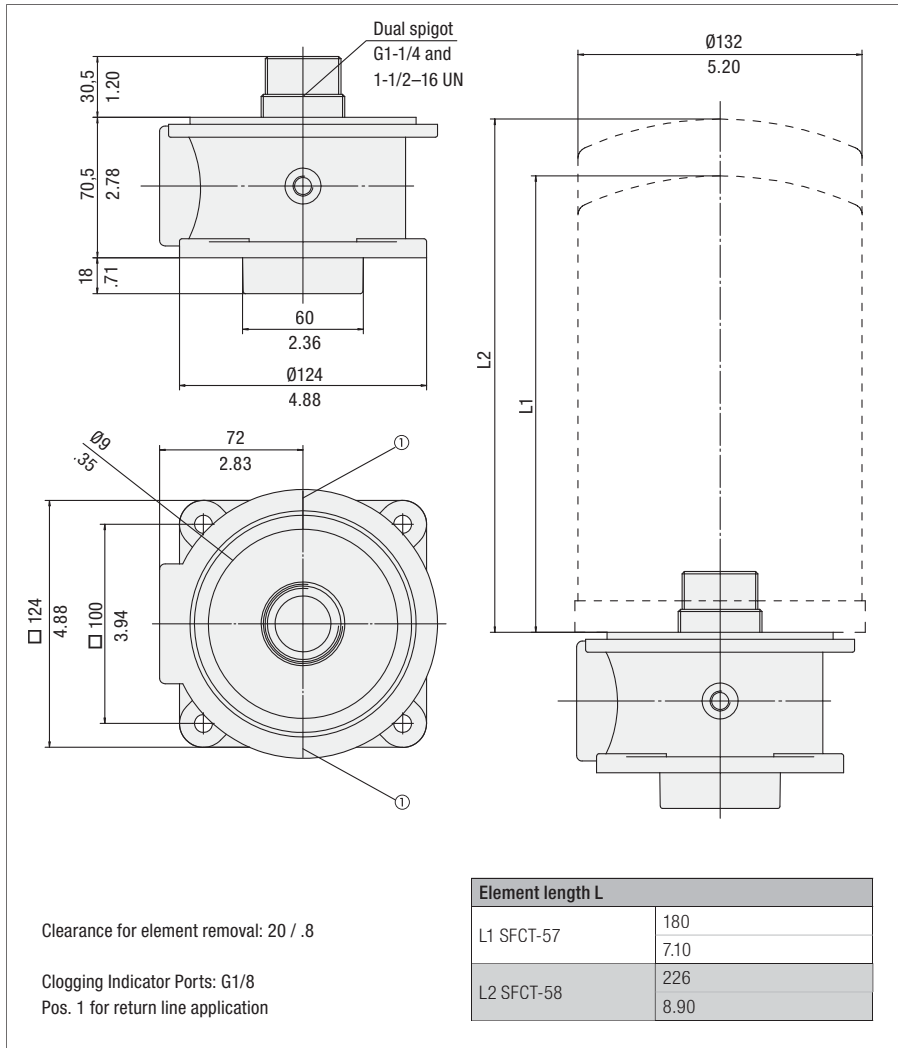
| | |
|---|----------|
| No clogging indicator port | 0 |
| Clogging indicator port drilled for return line application | 1 |
| Special | 9 |

Note: Standard clogging indicator port is 1/8 NPT.



Tank Top Spin-On Filter Heads ■ SSFT-20B

Dimensions



Clearance for element removal: 20 / .8

Clogging Indicator Ports: G1/8
Pos. 1 for return line application

Dimensions in mm / in



Technical Data

Construction

- Tank Top Spin-On filter head

Material

- Aluminium

Port Connection

- BSP

Flow Rate

- 200 l/min / 53 US GPM

Operating Pressure

- Max. 7 bar / 100 PSI

Temperature Range

- -30°C ... +100°C / -22°F ... +212°F

Media Compatibility

- Mineral oils, other fluids on request

Options and Accessories

Filter Elements

- For use with SFCT-57/58 series elements
- For element types with seal contour type A
- For element types and flow characteristics see page C140
- The element is not part of the scope of delivery

Valve

- Bypass valve 1,7 bar / 25 PSI integrated in the filter element

Clogging Indicators

- Visual clogging indicator with coloured segments
- Electrical clogging switch 0,35 ... 2,5 bar / 5 ... 35 PSI adjustable
- For clogging indicator types see page C147

Order Code

SSFT - 20B - 1

1 2 3

1 Type

Spin-On Filter Head **SSFT**

2 Connection Style

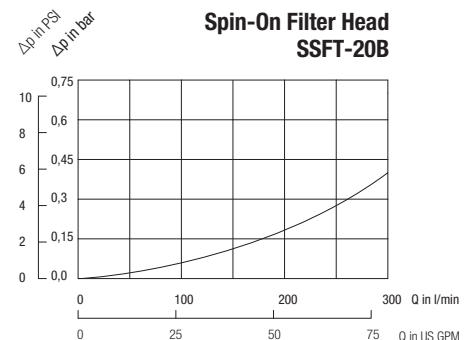
| Connection | Thread | Code |
|------------|--------|------------|
| BSP | 1-1/2 | 20B |

3 Clogging Indicator Port Options

Clogging indicator port drilled for return line application **1**
Special **9**

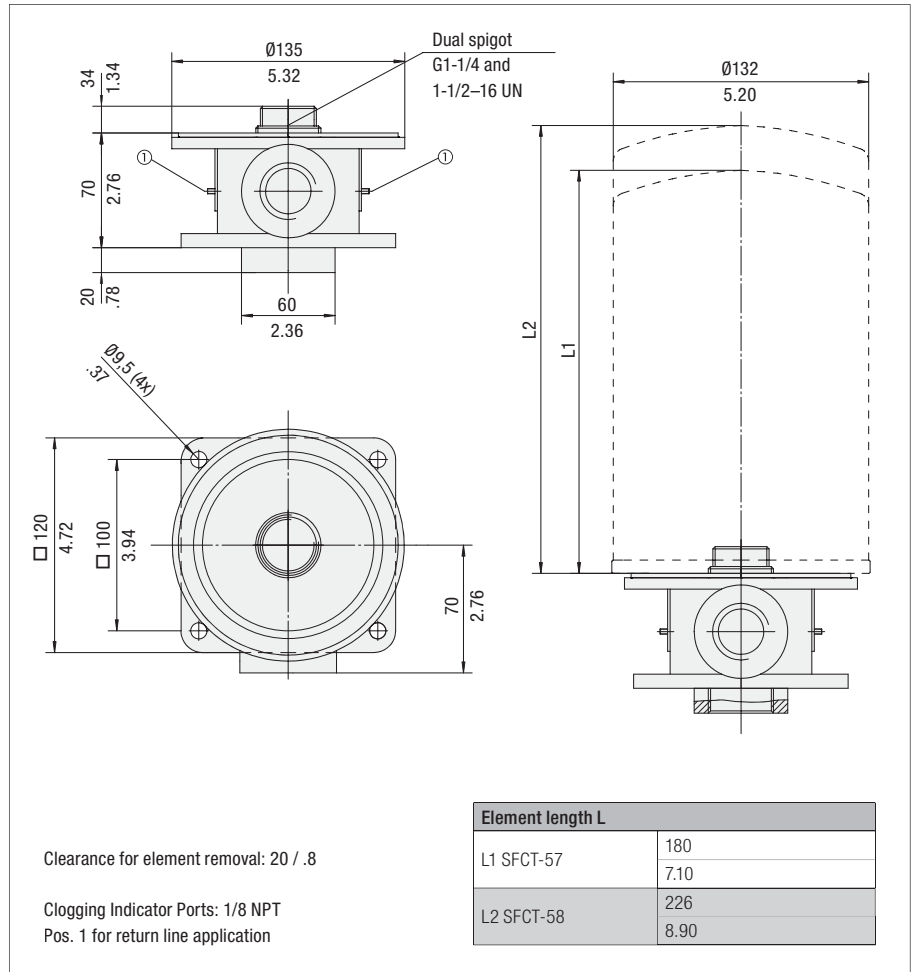
Note: Standard clogging indicator port is G1/8.

Spin-On Filter Head SSFT-20B



Tank Top Spin-On Filter Heads ■ SSFT-20

Dimensions



Dimensions in mm / in

Technical Data

Construction

- Tank Top Spin-On filter head

Material

- Aluminium

Port Connection

- NPT

Flow Rate

- 200 l/min / 53 US GPM

Operating Pressure

- Max. 7 bar / 100 PSI

Temperature Range

- -30°C ... +100°C / -22°F ... +212°F

Media Compatibility

- Mineral oils, other fluids on request

Options and Accessories

Filter Elements

- For use with SFCT-57/58 series elements
For element types with seal contour type A
For element types and flow characteristics see page C140
The element is not part of the scope of delivery

Valve

- Bypass valve 1,7 bar / 25 PSI integrated in the filter element

Clogging Indicators

- Visual clogging indicator with coloured segments
- Electrical clogging switch 0,35 ... 2,5 bar / 5 ... 35 PSI adjustable
For clogging indicator types see page C147

Order Code

SSFT-20-1

1 2 3

1 Type

Spin-On Filter Head **SSFT**

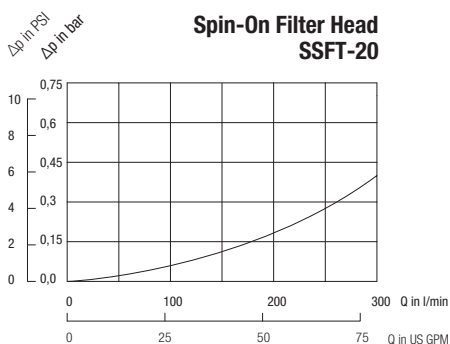
2 Connection Style

| Connection | Thread | Code |
|------------|--------|-----------|
| NPT | 1-1/2 | 20 |

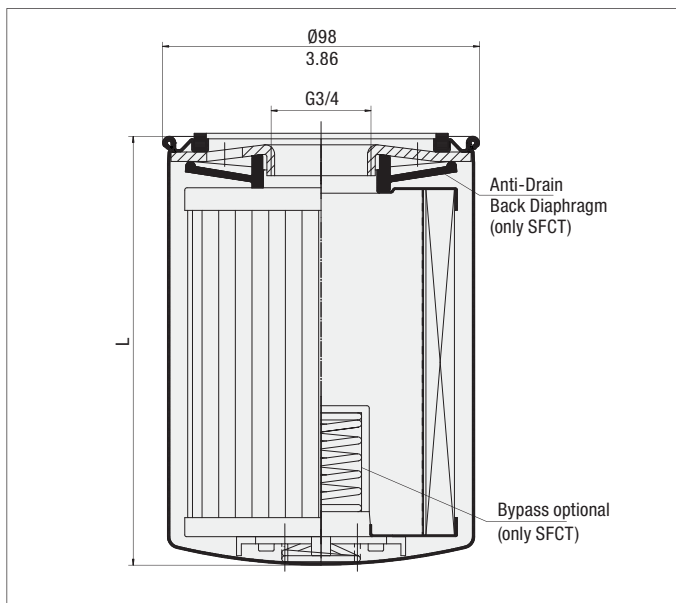
3 Clogging Indicator Port Options

| | |
|---|----------|
| No clogging indicator port | 0 |
| Clogging indicator port drilled for return line application | 1 |
| Special | 9 |

Note: Standard clogging indicator port is 1/8 NPT.



Spin-On Elements ▪ Type SFC-35 / 36 and SFCT-35 / 36



Dimensions in mm / in



Product Description

STAUFF SFC-35/36 series Spin-On Elements are used with the STAUFF SSF-12 Spin-On Filters with G3/4 threaded ports.

STAUFF SFCT-35/36 series Spin-On Elements have an internal 1,7 bar / 25 PSI bypass and anti-drain back diaphragm for use with STAUFF SSFT-12 Tank Top Spin-On Filters.

Technical Data

Connection Thread

- G3/4

Seal Contour

- Type A (see page C123)

Sealing Material

- NBR (Buna-N®)

Operating Pressure

- SFC: Max. 12 bar / 174 PSI
- SFCT: Max. 7 bar / 100 PSI

Differential Pressure

- SFC: Max. 4 bar / 58 PSI
- SFCT: Max. 3 bar / 43,5 PSI
(for any application with no bypass valve)

Burst Pressure

- SFC: Max. 25 bar / 363 PSI
- SFCT: Max. 21 bar / 305 PSI

Bypass Pressure

- 1,7 bar / 25 PSI (only SFCT-series)

Temperature Range

- -32°C ... +100°C / -25°F ... +212°F

Media Compatibility

- Mineral oils, other fluids on request

Dimensions

| Order Code | Filter Paper | | | | Inorganic Glass Fibre | | | | | |
|---|-------------------------|-------------------------|-------------------------|-------------------------|-----------------------|--------------------|---------------------------|---------------------------|---------------------------|---------------------------|
| | SFC-3510E SFCT-3510E | SFC-3610E SFCT-3610E | SFC-3525E SFCT-3525E | SFC-3625E SFCT-3625E | SFC-3503AE | SFC-3603AE | SFC-3510AE SFCT-3510AE | SFC-3610AE SFCT-3610AE | SFC-3525AE SFCT-3525AE | SFC-3625AE SFCT-3625AE |
| Element without bypass valve | | | | | | | | | | |
| Element with bypass valve | | | | | | | | | | |
| Length L (mm/in) | 145 5.7 | 190 7.5 | 145 5.7 | 190 7.5 | 145 5.7 | 190 7.5 | 145 5.7 | 190 7.5 | 145 5.7 | 190 7.5 |
| β-Ratio | $\beta_{10} \geq 2$ | $\beta_{10} \geq 2$ | $\beta_{25} \geq 2$ | $\beta_{25} \geq 2$ | $\beta_3 \geq 200$ | $\beta_3 \geq 200$ | $\beta_{10} \geq 200$ | $\beta_{10} \geq 200$ | $\beta_{25} \geq 200$ | $\beta_{25} \geq 200$ |
| Filter Area (cm ² /in ²) | 3305 510 | 4745 735 | 3305 510 | 4745 735 | 2140 330 | 3630 560 | 2140 330 | 3630 560 | 2140 330 | 3630 560 |
| Carton Quantity | 1 | 1 | 1 | 1 | 1 | 1 | 1 | 1 | 1 | 1 |
| Carton Weight (kg/lbs) | 0,9 2 | 1,3 2,6 | 0,9 2 | 1,3 2,6 | 0,9 2 | 1,3 2,6 | 0,9 2 | 1,3 2,6 | 0,9 2 | 1,3 2,6 |

| Order Code | Wire Mesh | | Brass Mesh | |
|---|-------------------------|-------------------------|---------------------------|---------------------------|
| | SFC-3560E SFCT-3560E | SFC-3660E SFCT-3660E | SFC-35125E SFCT-35125E | SFC-36125E SFCT-36125E |
| Element without bypass valve | | | | |
| Element with bypass valve | | | | |
| Length L (mm/in) | 145 5.7 | 190 7.5 | 145 5.7 | 190 7.5 |
| β-Ratio | n/a | n/a | n/a | n/a |
| Filter Area (cm ² /in ²) | 980 150 | 1390 215 | 980 150 | 1390 215 |
| Carton Quantity | 1 | 1 | 1 | 1 |
| Carton Weight (kg/lbs) | 0,9 2 | 1,3 2,6 | 0,9 2 | 1,3 2,6 |

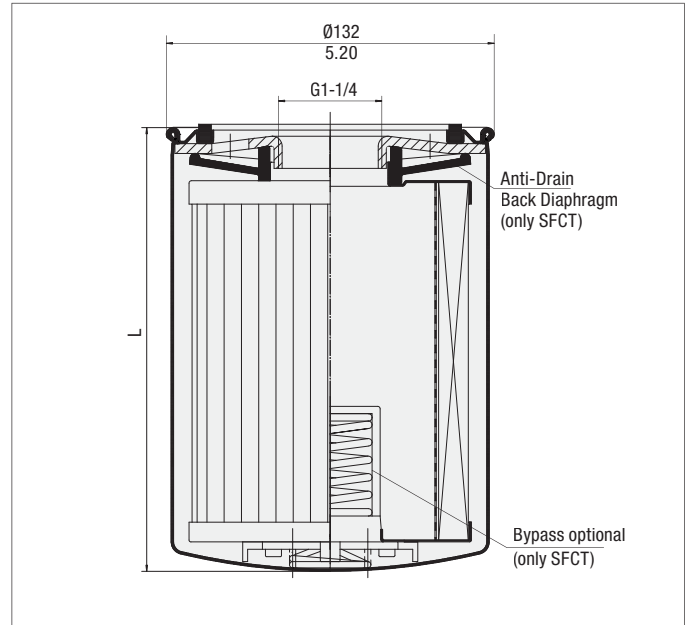
Spin-On Elements ▪ Type SFC-57 / 58 and SFCT-57 / 58



Product Description

STAUFF Spin-On Filter Elements of the SFC-/SFCT-57/58 series are used with the STAUFF SSF-20/24/25/100/120/130 and 160 series Spin-On Filters with G1-1/4 threaded ports.

STAUFF SFCT-57/58 series Spin-On Elements have an internal, 1,7 bar / 25 PSI bypass and anti-drain back diaphragm for use with STAUFF SSFT-20 Tank Top Spin-On Filters.



Dimensions in mm / in

Technical Data

Connection Thread

- G1-1/4

Operating Pressure

- SFC: Max. 12 bar / 174 PSI
- SFCT: Max. 7 bar / 100 PSI

Burst Pressure

- SFC: Max. 25 bar / 363 PSI
- SFCT: Max. 21 bar / 305PSI

Temperature Range

- -32°C ...+100°C / -25°F ... +212°F

Seal Contour

- Type A (see page C123)

Differential Pressure

- SFC: Max. 4 bar / 58 PSI
- SFCT: Max. 3 bar / 43,5PSI

Bypass Pressure

- 1,7 bar / 25 PSI
- (only SFCT-series)

Media Compatibility

- Mineral oils, other fluids on request

Sealing Material

- NBR (Buna-N®)

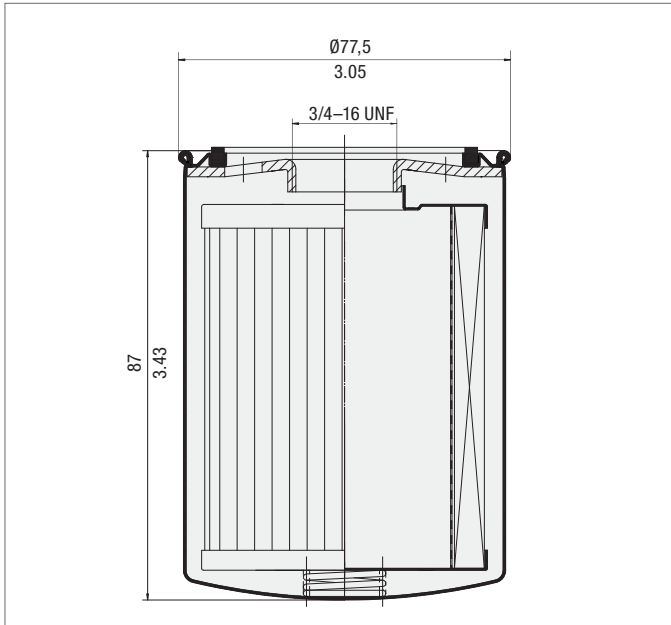
(for any application with no bypass valve)

Dimensions

| Order Code | Filter Paper | | | | Inorganic Glass Fibre | | | | | |
|--|------------------------------|---------------------|---------------------|---------------------|-----------------------|----------------------|-----------------------|-----------------------|-----------------------|-----------------------|
| | Element without bypass valve | SFC-5710E | SFC-5810E | SFC-5725E | SFC-5825E | SFC-5703AE | SFC-5803AE | SFC-5710AE | SFC-5810AE | SFC-5725AE |
| Element with bypass valve | SFCT-5710E | SFCT-5810E | SFCT-5725E | SFCT-5825E | SFCT-5703AE | SFCT-5803AE | SFCT-5710AE | SFCT-5810AE | SFCT-5725AE | SFCT-5825AE |
| | | | | | | | | | | |
| Length L (mm/in) | 180 7.1 | 226 8.9 | 180 7.1 | 226 8.9 | 180 7.1 | 226 8.9 | 180 7.1 | 226 8.9 | 180 7.1 | 226 8.9 |
| β-Ratio | β ₁₀ ≥ 2 | β ₁₀ ≥ 2 | β ₂₅ ≥ 2 | β ₂₅ ≥ 2 | β ₃ ≥ 200 | β ₃ ≥ 200 | β ₁₀ ≥ 200 | β ₁₀ ≥ 200 | β ₂₅ ≥ 200 | β ₂₅ ≥ 200 |
| Filter Area (cm²/in²) | 5560 860 | 7360 1140 | 5560 860 | 7360 1140 | 4450 700 | 5890 910 | 4450 700 | 5890 910 | 4450 700 | 5890 910 |
| Carton Quantity | 1 | 1 | 1 | 1 | 1 | 1 | 1 | 1 | 1 | 1 |
| Carton Weight (kg/lbs) | 1,4 3 | 1,85 4 | 1,4 3 | 1,85 4 | 1,4 3 | 1,85 4 | 1,4 3 | 1,85 4 | 1,4 3 | 1,85 4 |

| Order Code | Wire Mesh | | Brass Mesh | |
|--|------------------------------|-------------|-------------|-------------|
| | Element without bypass valve | SFC-5760E | SFC-5860E | SFC-57125E |
| Element with bypass valve | SFCT-5760E | SFCT-5860E | SFCT-57125E | SFCT-58125E |
| | | | | |
| Length L (mm/in) | 180 7.1 | 226 8.9 | 180 7.1 | 226 8.9 |
| β-Ratio | n/a | n/a | n/a | n/a |
| Filter Area (cm²/in²) | 1940 300 | 2570 400 | 1940 300 | 2570 400 |
| Carton Quantity | 1 | 1 | 1 | 1 |
| Carton Weight (kg/lbs) | 0,9 2 | 1,3 2,6 | 0,9 2 | 1,3 2,6 |

Spin-On Elements ▪ Type SF63



Dimensions in mm / in



Product Description

STAUFF SF63-series Spin-On Elements are used with the STAUFF SLF Spin-On Filters.

Technical Data

Connection Thread

- 3/4-16 UNF

Seal Contour

- Type A (see page C123)

Sealing Material

- NBR (Buna-N®)

Operating Pressure

- Max. 14 bar / 200 PSI

Differential Pressure

- Max. 5,5 bar / 80 PSI
(for any application with no bypass valve)

Burst Pressure

- Max. 20 bar / 290 PSI

Bypass Pressure

- SF6310-18 1,24 bar / 18 PSI
- SF6325-10 0,70 bar / 10 PSI

Temperature Range

- -32°C ... +100°C / -25°F ... +212°F

Media Compatibility

- Mineral oils, other fluids on request

Dimensions

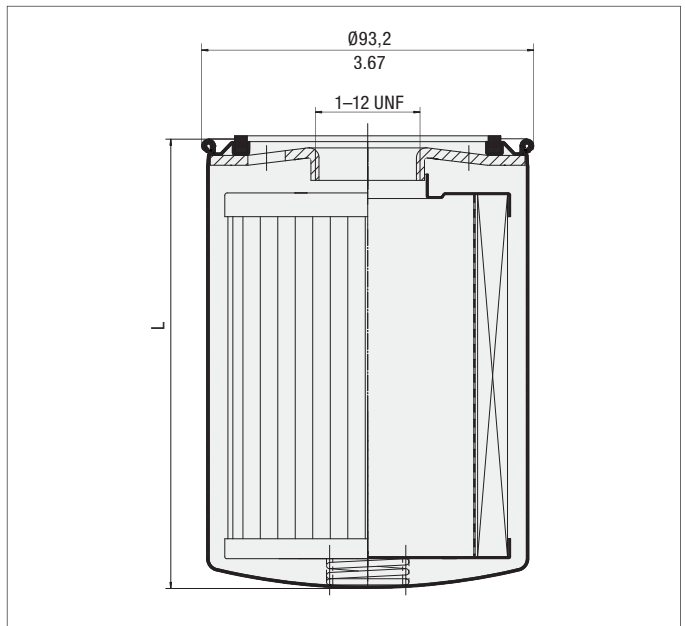
| Order Code | Filter Paper | |
|---|---------------------|---------------------|
| | SF6310-18 | SF6325-10 |
| | | |
| β-Ratio | $\beta_{10} \geq 2$ | $\beta_{25} \geq 2$ |
| Filter Area (cm ² /in ²) | 825 125 | 825 125 |
| Dirt Holding Capacity (g) | 6 | 6 |
| Carton Quantity | 12 | 12 |
| Carton Weight (kg/lbs) | 3,6 8 | 3,6 8 |

Spin-On Elements ▪ Type SF65



Product Description

STAUFF SF65-series Spin-On Elements are used with the STAUFF SAF series Spin-On Filters.



Dimensions in mm / in

Technical Data

Connection Thread

- 1-12 UNF

Sealing Material

- NBR (Buna-N®)

Differential Pressure

- Max. 5,5 bar / 80 PSI
(for any application with no bypass valve)

Temperature Range

- -32°C ... +100°C / -25°F ... +212°F

Seal Contour

- Type A (see page C123)

Operating Pressure

- Max. 14 bar / 200 PSI








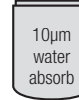
Burst Pressure

- Max. 20 bar / 290 PSI

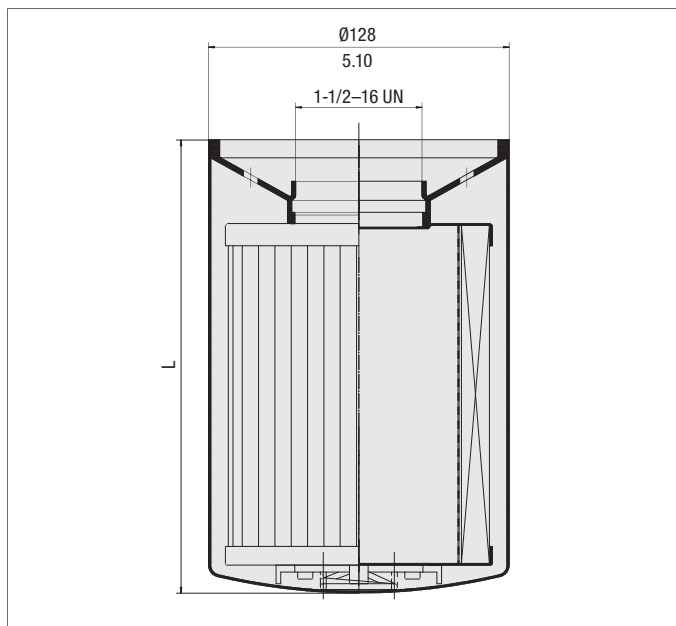
Media Compatibility

- Mineral oils, other fluids on request

Dimensions

| Order Code | Filter Paper | | | | Inorganic Glass Fibre | | | Water Absorbing |
|---|---|---|---|---|--|---|---|---|
| | SF6520 | SF6521 | SF6510 | SF6511 | SF6549 | SF6505 | SF6504 | SF6520-W |
| |  |  |  |  |  |  |  |  |
| Length L (mm/in) | 147 5.76 | 204 8.00 | 147 5.76 | 204 8.00 | 147 5.76 | 147 5.76 | 147 5.76 | 133 5.25 |
| β-Ratio | β ₁₀ ≥ 2 | β ₁₀ ≥ 2 | β ₂₅ ≥ 2 | β ₂₅ ≥ 2 | β ₃ ≥ 200 | β ₁₂ ≥ 200 | β ₂₅ ≥ 200 | β ₁₀ ≥ 2 |
| Filter Area (cm ² /in ²) | 2302 355 | 3881 600 | 2212 340 | 3388 525 | 2519 390 | 2405 370 | 2405 370 | 1225 200 |
| Dirt Holding Capacity ACFTD (g) | 14.4 | 22 | 20.4 | 31.2 | 19 | 11 | 26 | Water holding capacity 162 ml 5.5 oz |
| Carton Quantity | 12 | 12 | 12 | 12 | 12 | 12 | 12 | 12 |
| Carton Weight (kg/lbs) | 6,3 13.9 | 8,4 18.5 | 6,4 14.2 | 8,8 19.4 | 8,6 19 | 8,6 19 | 8,6 19 | 8,6 19 |

Spin-On Elements - Type SF67



Dimensions in mm / in



Product Description

STAUFF SF67-series Spin-On Elements are used with the STAUFF SSF20/24/25/100/120/130/160/150 and 180 Spin-On Filters.

Technical Data

Connection Thread

- 1-1/2-16 UN

Sealing Material

- NBR (Buna-N®)

Differential Pressure

- Max. 5,5 bar / 80 PSI
(for any application with no bypass valve)

Temperature Range

- 32°C ... +100°C / -25°F ... +212°F

Seal Contour

- Type B (see page C123)

Operating Pressure

- Max. 14 bar / 200 PSI

Burst Pressure

- Max. 20 bar / 290 PSI

Media Compatibility

- Mineral oils, other fluids on request

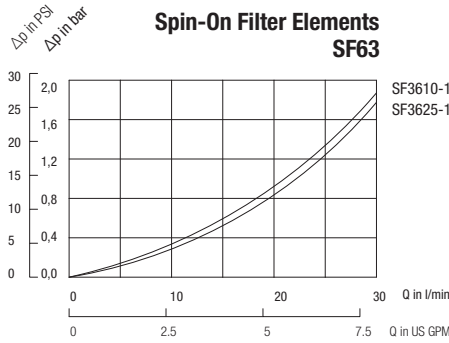
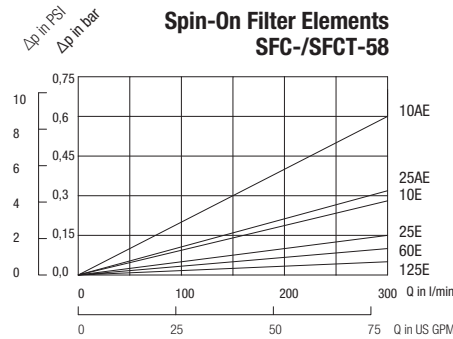
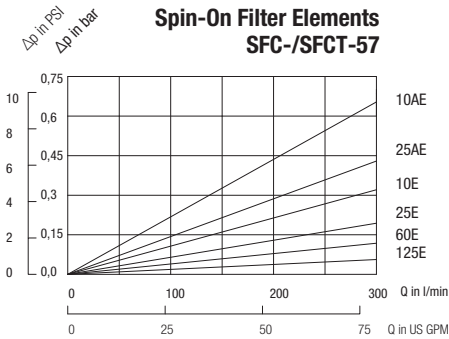
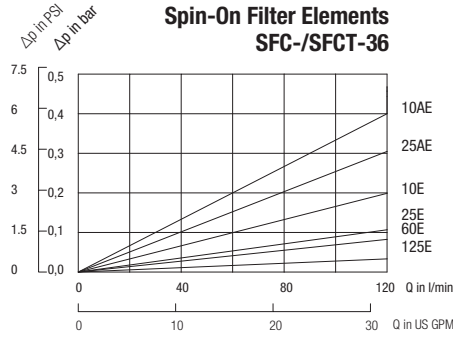
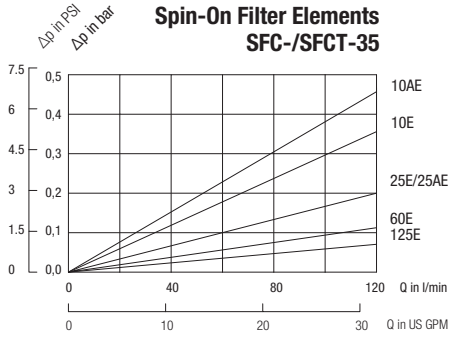
Dimensions

| Order Code | Inorganic Glass Fibre | | | | | | | | |
|---|-----------------------|--------------------|--------------------|--------------------|--------------------|-----------------------|-----------------------|-----------------------|-----------------------|
| | SF6702-MG | SF6703-MG | SF6704-MG | SF6706-MG | SF6707-MG | SF6730-MG | SF6731-MG | SF6728-MG | SF6726-MG |
| | | | | | | | | | |
| Length L (mm/in) | 270 10.6 | 168 6.6 | 270 10.6 | 168 6.6 | 270 10.6 | 168 6.6 | 270 10.6 | 168 6.6 | 270 10.6 |
| β-Ratio | $\beta_1 \geq 200$ | $\beta_3 \geq 200$ | $\beta_3 \geq 200$ | $\beta_6 \geq 200$ | $\beta_6 \geq 200$ | $\beta_{12} \geq 200$ | $\beta_{12} \geq 200$ | $\beta_{25} \geq 200$ | $\beta_{25} \geq 200$ |
| Filter Area (cm ² /in ²) | 8167 1265 | 4051 625 | 8167 1265 | 4051 625 | 7200 1116 | 4051 625 | 7522 1165 | 4051 625 | 8167 1265 |
| Dirt Holding Capacity ACFTD (g) | 30 | 31 | 47 | 35 | 54 | 38 | 59 | 50 | 76 |
| Carton Quantity | 6 | 6 | 6 | 6 | 6 | 6 | 6 | 6 | 6 |
| Carton Weight (kg/lbs) | 11,8 26.1 | 8,2 18 | 11,8 26.1 | 8,2 18 | 11,8 26.1 | 8,2 18 | 11,8 26.1 | 8,2 18 | 11,8 26.1 |

| Order Code | Filter Paper | | | | Stainless Wire Mesh | | Water Absorbing |
|---|---------------------|---------------------|---------------------|---------------------|---------------------|--------------|--|
| | SF6720 | SF6721 | SF6710 | SF6711 | SF6790 | SF6791 | SF6721-W |
| | | | | | | | |
| Length L (mm/in) | 168 6.6 | 270 10.6 | 168 6.6 | 270 10.6 | 168 6.6 | 270 10.6 | 270 10.6 |
| β-Ratio | $\beta_{10} \geq 2$ | $\beta_{10} \geq 2$ | $\beta_{25} \geq 2$ | $\beta_{25} \geq 2$ | n/a | n/a | $\beta_{10} \geq 2$ |
| Filter Area (cm ² /in ²) | 3677 570 | 6813 1055 | 3677 570 | 6813 1055 | 1290 200 | 2032 315 | 4440 690 |
| Dirt Holding Capacity ACFTD (g) | 34 | 62 | 34 | 62 | n/a | n/a | Water holding capacity 444 ml / 15 oz |
| Carton Quantity | 6 | 6 | 6 | 6 | 6 | 6 | 6 |
| Carton Weight (kg/lbs) | 6,6 14.6 | 7,9 17.5 | 6,7 14.9 | 9,3 20.6 | 8,2 18 | 11,8 26.1 | 11,8 26.1 |

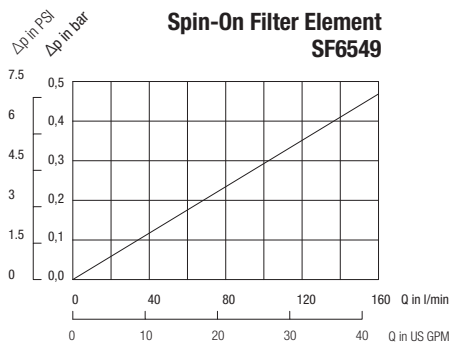
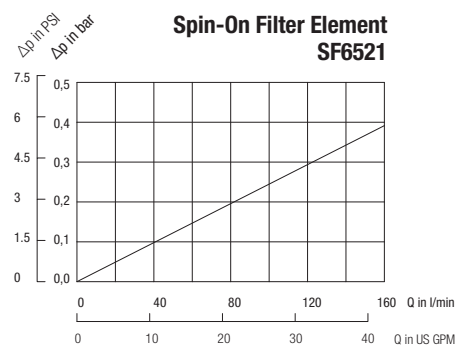
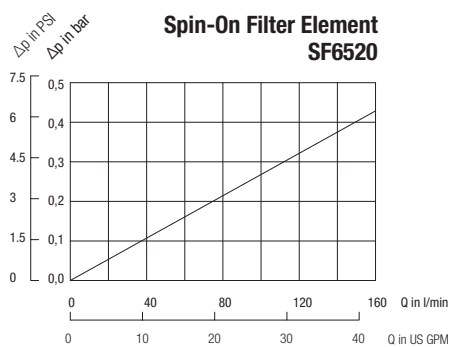
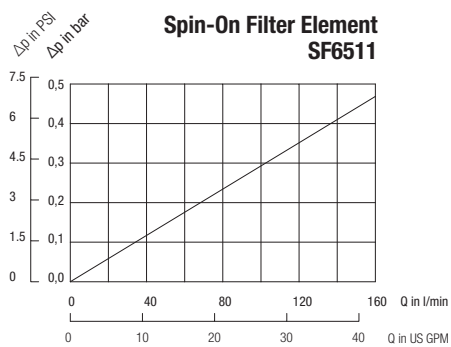
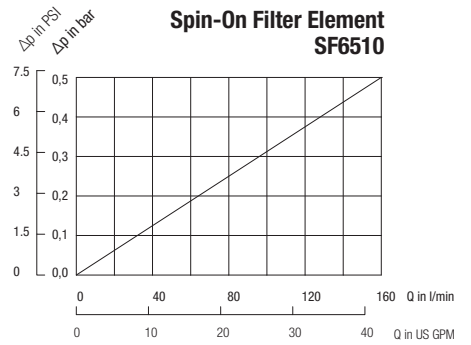
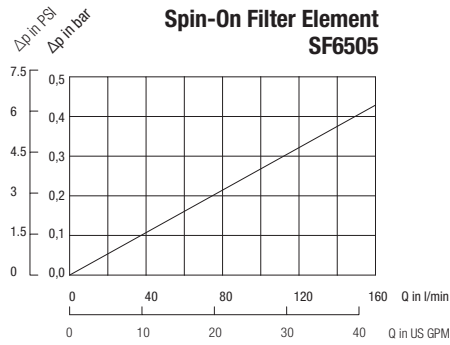
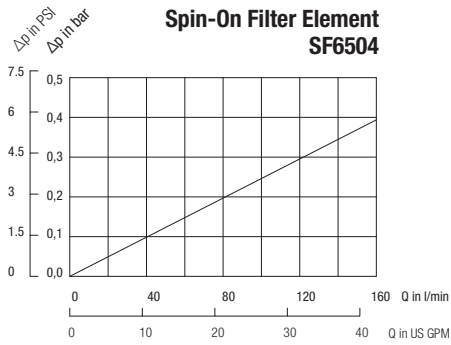
Spin-On Elements - Type SFC/SFCT-35/36, SFC/SFCT-57/58 and SF63

The following characteristics are valid for mineral oils with a density of 0,85 kg/dm³ and the kinematic viscosity of 30 mm²/s (30 cSt). The characteristics have been determined in accordance to ISO 3968. SFC-35/36 series Spin-On Elements are used with STAUFF SSF-12 Spin-On Filters, SFCT-35/36 series Spin-On Elements are used with STAUFF SSFT-12 Spin-On Filters, SFC-57/58 series Spin-On Elements are used with STAUFF SSF-20/24/25/100/120/130/160 Spin-On Filters, SFCT-57/58 series Spin-On Elements are used with STAUFF SSFT-20 Spin-On Filters and SF63 series Spin-On Elements are used with STAUFF SLF-02/03/04 Spin-On Filters.



Spin-On Elements ■ Type SF65

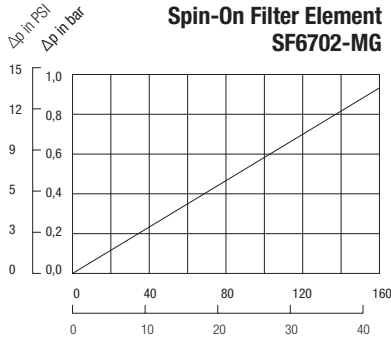
The following characteristics are valid for mineral oils with a density of 0,85 kg/dm³ and the kinematic viscosity of 30 mm²/s (30 cSt). The characteristics have been determined in accordance to ISO 3968. SF65 Spin-On Elements are used with the STAUFF SAF-05/06/07/10/11/13 Spin-On Filters.



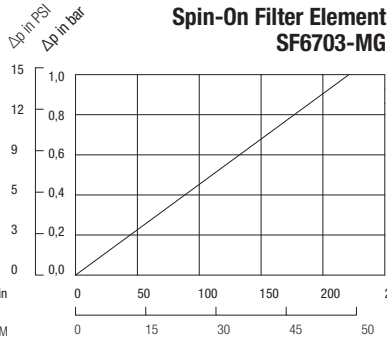
Spin-On Elements - Type SF67

The following characteristics are valid for mineral oils with a density of 0,85 kg/dm³ and the kinematic viscosity of 30 mm²/s (30 cSt). The characteristics have been determined in accordance to ISO 3968. SF67 Spin-On Elements are used with the STAUFF SSF-20/24/25/100/120/130/160/150/180 Spin-On Filters.

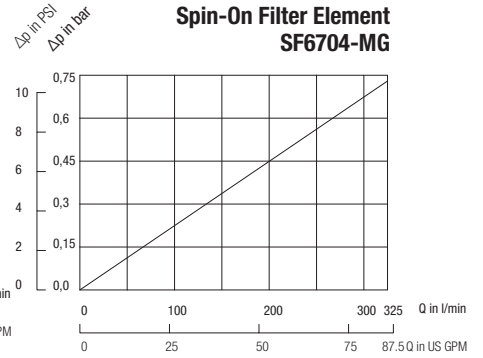
Spin-On Filter Element SF6702-MG



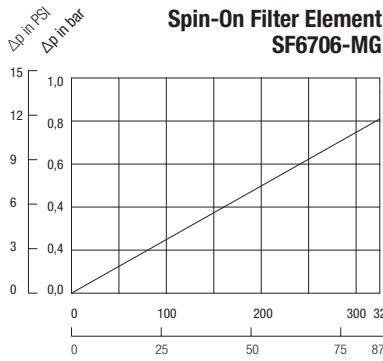
Spin-On Filter Element SF6703-MG



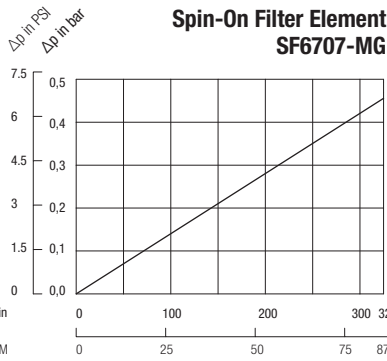
Spin-On Filter Element SF6704-MG



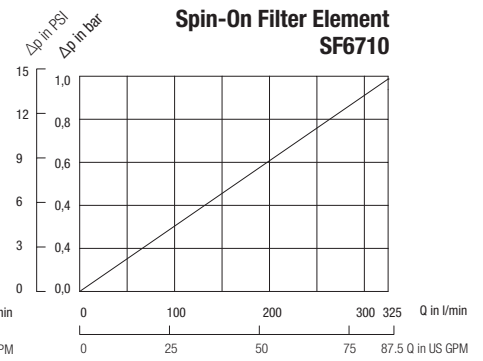
Spin-On Filter Element SF6706-MG



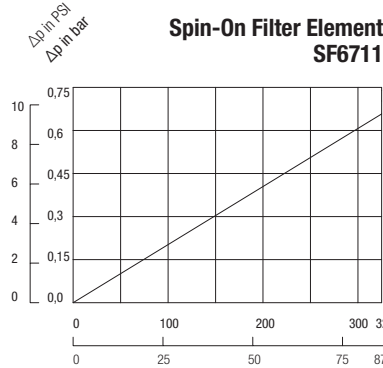
Spin-On Filter Element SF6707-MG



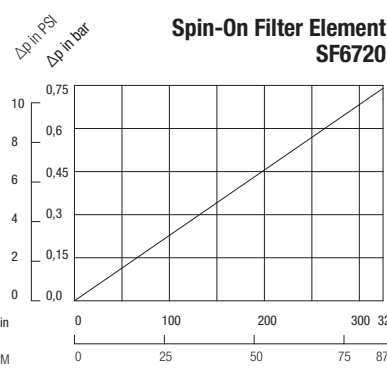
Spin-On Filter Element SF6710



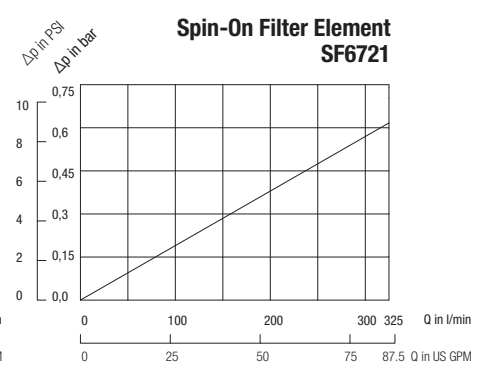
Spin-On Filter Element SF6711



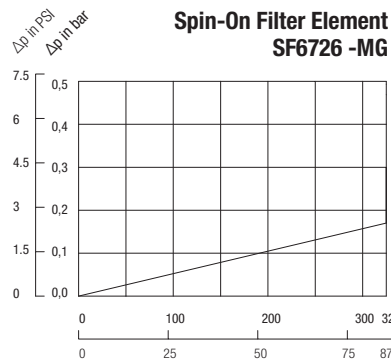
Spin-On Filter Element SF6720



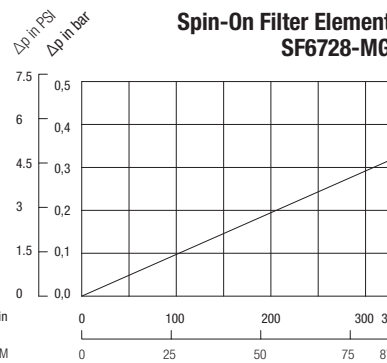
Spin-On Filter Element SF6721



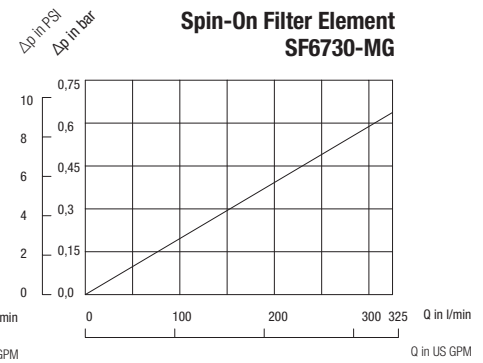
Spin-On Filter Element SF6726 -MG



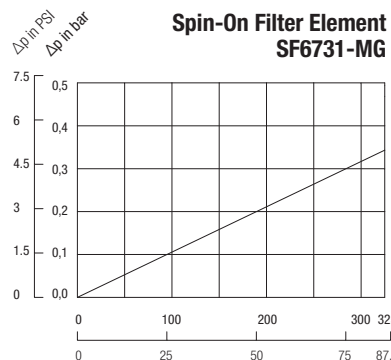
Spin-On Filter Element SF6728-MG



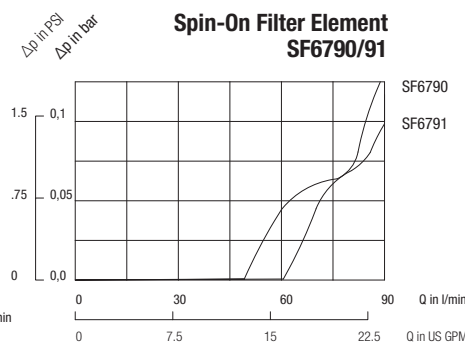
Spin-On Filter Element SF6730-MG



Spin-On Filter Element SF6731-MG



Spin-On Filter Element SF6790/91



Clogging Indicators

Visual Clogging Indicators



SIS



GV-10

Visual Vacuum Clogging Indicators (for Spin-On Filter in suction line applications)

| | Type | Thread Connection G | Unit of scale | Range of scale | Coloured Segments | | | Valve setting Spin-On Filter |
|-----|-------|---------------------|---------------|----------------|-------------------|-------------|-------------|------------------------------|
| | | | | | Green | Yellow | Red | |
| BSP | SIS | 1/8 | cm Hg | -76 ... 0 | -13 ... 0 | -18 ... -13 | -76 ... -18 | 0,2 bar/ 3 PSI |
| | GV-5 | 1/8 | in Hg | -30 ... 0 | -4 ... 0 | -6 ... -4 | -30 ... -6 | 0,2 bar/ 3 PSI |
| NPT | GV-10 | 1/8 | in Hg | -30 ... 0 | -9 ... 0 | -11 ... -9 | -30 ... -11 | 0,35 bar/ 5 PSI |



SIM-04



CI-12

Visual Pressure Clogging Indicators (for Spin-On Filter in return line applications)

| | Type | Thread Connection G | Unit of scale | Range of scale | Coloured Segments | | | Valve setting Spin-On Filter |
|-----|--------|---------------------|---------------|----------------|---------------------------|-------------|-------------|------------------------------|
| | | | | | Green | Yellow | Red | |
| BSP | SIM-02 | 1/8 | bar | 0 ... 2,5 | 0 ... 1,2 | 1,2 ... 1,5 | 1,5 ... 2,5 | 1,7 bar/ 25 PSI |
| | SIM-04 | 1/8 | bar | 0 ... 4 | 0 ... 2,5 | 2,5 ... 3 | 3 ... 4 | 1,7 bar/ 25 PSI |
| | SIM-12 | 1/8 | bar | 0 ... 12 | without coloured segments | | | 1,7 bar/ 25 PSI |
| NPT | CI-12 | 1/8 | PSI | 0 ... 100 | 0 ... 13 | 13 ... 15 | 15 ... 100 | 1 bar/ 15 PSI |
| | CI-20 | 1/8 | PSI | 0 ... 100 | 0 ... 21 | 21 ... 25 | 25 ... 100 | 1,7 bar/ 25 PSI |

Electrical Clogging Indicators



SIE-NO/NC



EPS/EVS

Electrical Clogging Indicators (for Spin-On Filter in return line or suction line applications)

| | Type | Thread Connection G | Unit of scale | Adjustable range / Actuating pressure | Max. over pressure | Spin-On filter application | Valve setting Spin-On Filter |
|-----|--------|---------------------|---------------|---------------------------------------|--------------------|----------------------------|------------------------------|
| BSP | SIE-NO | 1/8 | bar | 1,3 (normally open) | 80 bar / 1160 PSI | Return line application | 1,7 bar / 25 PSI |
| | SIE-NC | 1/8 | bar | 1,3 (normally closed) | 80 bar / 1160 PSI | Return line application | 1,7 bar / 25 PSI |
| | EPS-1B | 1/8 | bar | 0,35 ... 2,5 | 25 bar / 362 PSI | Return line application | 1,7 bar / 25 PSI |
| | EVS-1B | 1/8 | mbar | -1000 ... -150 | 25 bar / 362 PSI | Suction line application | 0,2 bar / 3 PSI |
| NPT | EPS-1 | 1/8 | PSI | 5 ... 35 | 24 bar / 350 PSI | Return line application | 1,7 bar / 25 PSI |
| | EVS-1 | 1/8 | in Hg | -30 ... -5 | 24 bar / 350 PSI | Suction line application | 0,2 bar / 3 PSI |

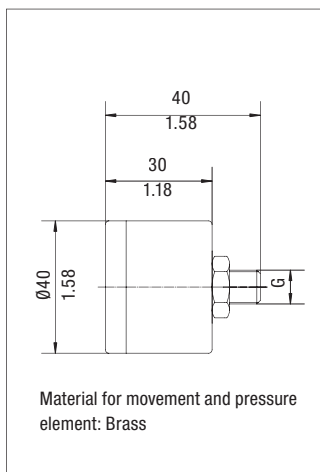
Technical Data SIE / EPS / EVS

| | Type EPS-1 / 1B | Type EVS-1 / 1B |
|--------------------|---|------------------------------------|
| Electrical data | 6 Amp 125/250 V AC | |
| Protection | DIN 43650 IP65 | |
| Temperature Range | -5°C ... +90°C / +23°F ... +194°F (ambient and media) | |
| Diaphragm Material | NBR (Buna-N®) | NBR (Buna-N®) |
| Housing Material | Brass | Steel |
| Adjustable Range | 0,35 bar ... 2,0 bar / 5 ... 30 PSI | 150 ... 1000 mbar / 5 ... 30 in Hg |
| Dead Band | 20% F.S. | 25% F.S. |
| Weight | 0,1 kg / .22 lbs | 0,1 kg / .22 lbs |
| Repeatability | ± 2% | |
| | Hirschmann Connector With Strain Relief | |

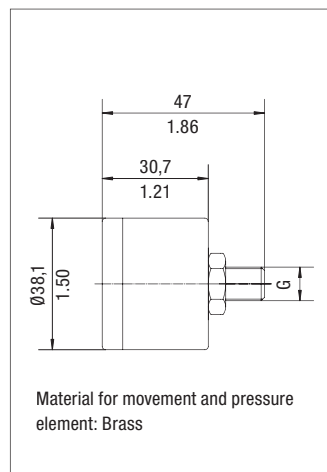
| | Type SIE (electrical switch) |
|---------------------|--|
| Electrical data | 48V |
| Protection | DIN 43650 IP54 |
| Temperature Range | -5 °C ... +60 °C / +23 °F ... +140 °F (ambient and media) |
| Diaphragm Material | NBR (Buna-N®) |
| Housing Material | Brass |
| Actuating Pressure | 1,3 bar / 19 PSI |
| Max. current (res.) | 0,5 A |
| Max. current (ind.) | 0,2 A |
| | Available as "normally open" (closes contact at actuating pressure) and as "normally closed" (opens contact at actuating pressure) |

Dimensions

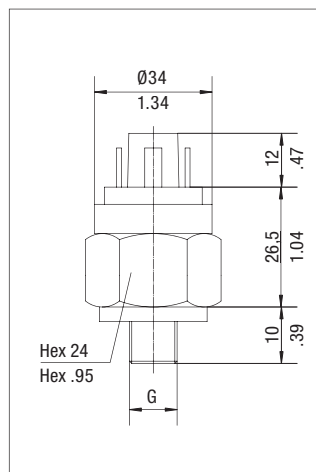
Type SIM / SIS



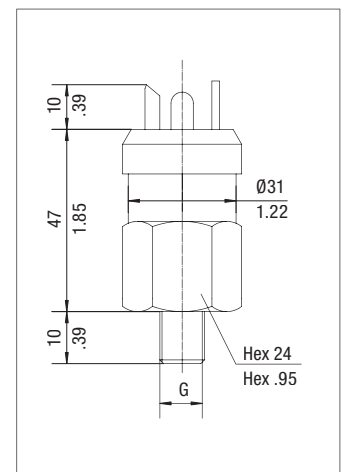
Type GV / CI



Type SIE



Type EPS / EVS



Dimensions in mm/in

